

Life Information News KOMAKI

5
2012



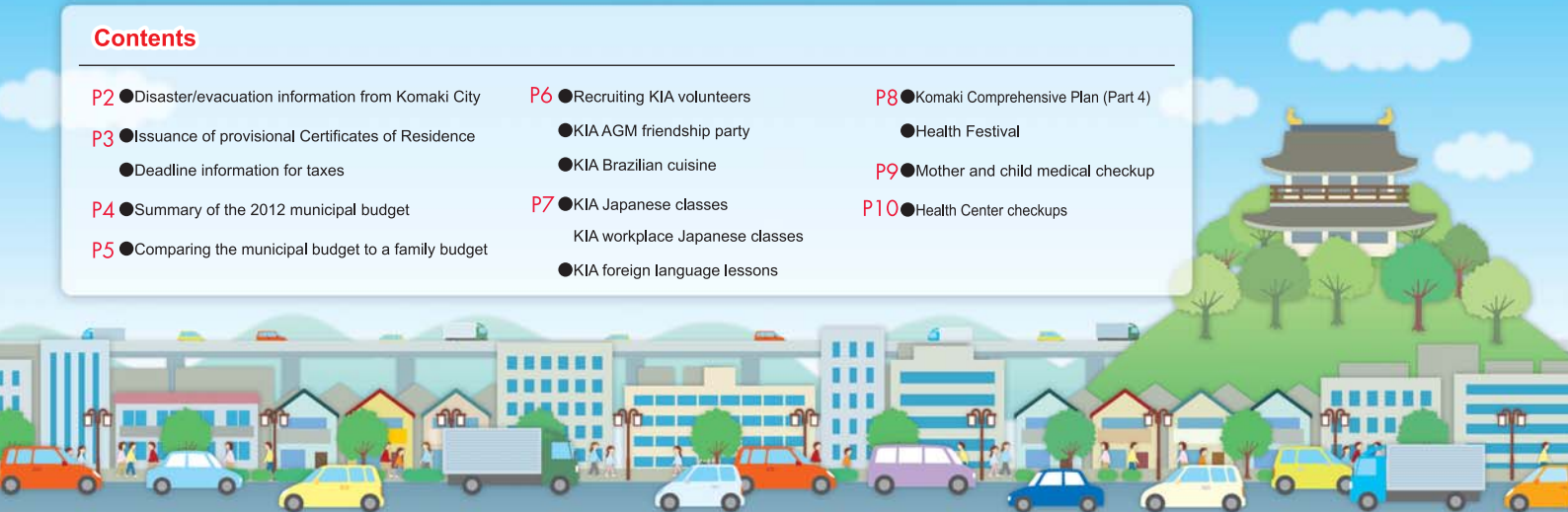
Nanohana Festival (April 15)

Contents

- P2 ● Disaster/evacuation information from Komaki City
- P3 ● Issuance of provisional Certificates of Residence
 - Deadline information for taxes
- P4 ● Summary of the 2012 municipal budget
- P5 ● Comparing the municipal budget to a family budget

- P6 ● Recruiting KIA volunteers
 - KIA AGM friendship party
 - KIA Brazilian cuisine
- P7 ● KIA Japanese classes
 - KIA workplace Japanese classes
 - KIA foreign language lessons

- P8 ● Komaki Comprehensive Plan (Part 4)
 - Health Festival
- P9 ● Mother and child medical checkup
- P10 ● Health Center checkups





Emergency/evacuation information from Komaki by text message

You are living in an area subject to the possibility of natural disasters including torrential rains, typhoons and earthquakes. Komaki City has partnered with cellular providers to deliver emergency and evacuation information (NTT Docomo's Area Mail, and Emergency Notification Mail from Softbank and KDDI). (Note: Some devices cannot receive these notifications. Please check with your carrier.)



Disaster/Evacuation Information

Disaster/Evacuation Information	Description
①避難準備情報 <small>ひなん じゅんび じょうほう</small>	「避難準備情報」 is sent to allow preparation for evacuation by elderly, children, foreign residents, disabled and other vulnerable persons in advance when there is a high probability of disaster .
②避難勧告 <small>ひなん かんこく</small>	「避難勧告」 are sent to ask people to go to an evacuation center when the probability of a disaster is high.
③避難指示 <small>ひなん しじ</small>	「避難指示」 indicate that one should go to an evacuation center as soon as possible due to imminent danger.
④土砂災害警戒情報 <small>どしゃ さいがい けいかい じょうほう</small>	「土砂災害警戒情報」 are sent when evacuation is necessary due to danger for people living in proximity to mountains.
⑤東海地震予知情報 <small>とうかい じしん よち じょうほう</small>	「東海地震予知情報」 are sent to notify that a large-scale earthquake is coming to this area.

Evacuation centers in case of an earthquake include:

⇒ Nearby schools

During torrential rain:

⇒ Nearby public halls and other meeting places

If you do not know your evacuation center:

⇒ Ask a neighbor or get a map indicating nearby evacuation centers from City Hall.

From April 1, Komaki will add Magnitude Information (**Earthquake Information**) to disaster prevention notifications. These will be sent regarding earthquakes affecting Komaki.

• If you have already registered:

Read the QR code and send a blank mail. You will receive a response to notify you of your registration. Click the URL in the text message under the heading “りようしや じょうほう へんこう かいじょ ところ利用者情報の変更・解除はコチラ”.

①Update registration information → ②[Check Magnitude Information] → ③Next → ④Register input content

• If newly registering:

Read the QR code and send a blank mail. You will receive a response to notify you of your registration. Click the URL under the heading “ほんとうろく ところ ねが本登録はコチラからお願いします”. Check the box.

Blank mail address: **t-komaki@sg-m.jp**

[QR Code]



• Information Distributed

1. Automatically distributed information from the JMA

- Warnings (torrential rain, flooding, strong winds, heavy snowfall, blizzards)
- Magnitude Information (earthquake information) * sent starting from level 1 on the JMA scale.

2. Emergency information from Komaki City (emergency/evacuation information)

Toll free: 0120-670-970 (Weekdays 9:00 to 18:00) * Service in Japanese only

Inquiries

Crisis Management Division

TEL.0568-76-1171

To all foreigners

We are sending out notification of the details on your provisional certificates of residence!

The foreign registration system will be abolished from July 9 (Mon) of this year, and thereafter foreign residents will be listed in the same resident registry as Japanese people. In order to confirm the information that will be written in the resident registry, all foreign residents will be sent a notification of details on the provisional certificate of residence by postal mail.

Persons without a status of residence on July 9, 2012, persons with a temporary status of residence of less than three months, and persons with a short-term status of residence, cannot have a certificate of residence or seal registration certificate issued. Please apply correctly at the Immigration Bureau or City Hall.

Foreigners that will have a certificate of residence shall be sent a notification of details on the provisional certificate of residence in mid-May. Verify the content of the letter and contact the resident registry desk at the Citizen Division at City Hall if any error is found.



Notice: Komaki Station Branch Office closing temporarily

Due to changes in various systems accompanying the revision to the Residential Basic Book Act, the office will be closed July 7 (Sat) and 8 (Sun).

Inquiries Citizens Division TEL0568-76-1121

Next tax payment deadline: May 31 (Thu)

●Light Vehicle Tax (1st Term)

Please pay your taxes by the deadline.

We recommend using bank transfers.

If you have set up direct debit payments for your taxes, be sure that your account has sufficient funds available by the day before payment is due.



If you are unable to pay your taxes on a weekday:

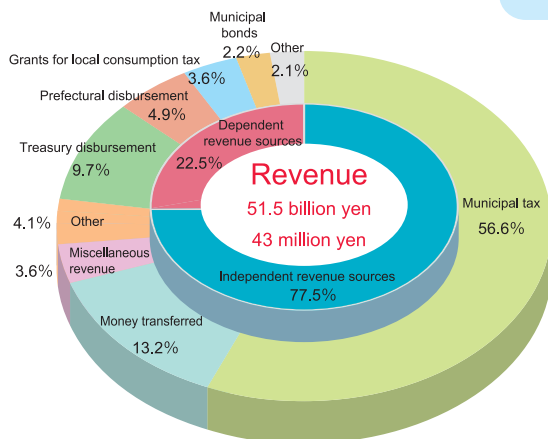
- The City Hall will be open on the following Sundays to answer tax-related questions and accept payments.
◎Time: May 13 (Sun) & May 27 (Sun) 8:30 to 17:15
- Tax payments can be paid every day at the Komaki Station Branch Office.
◎Time: 8:30 to 17:15
※The Komaki Station branch office is closed during the New Year holidays (Dec 29 to Jan 3).
- If your payment slip has a barcode, you may pay your taxes at a local convenience store.
※Provided that the payment deadline has not been exceeded

Inquiries Tax Office TEL0568-72-2101 (Rep.) Ext.276~279 TEL0568-76-1117 / 0568-76-1118(Direct)

Overview of the initial budget for fiscal 2012

The general budget is the core municipal budget, covering all parts of the budget excluding special budgets. The initial general budget for fiscal 2012 is 51,543,000,000 yen, which is about 1,181,000,000 yen more than the budget as revised last June.

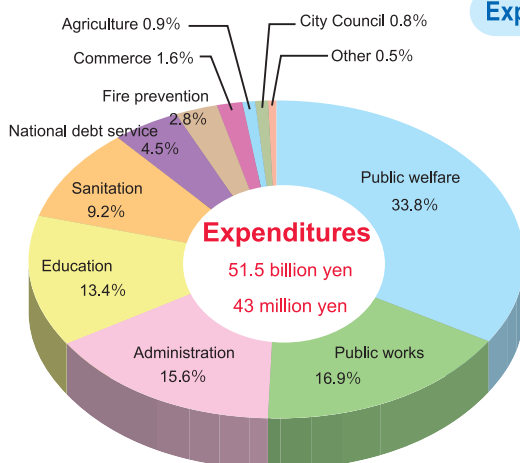
Revenue



Definitions

- Independent revenue sources: Independently collected sources of municipal revenue such as taxes and services fees
- Dependent revenue sources: Subsidies and other monies from the national and prefectural government
- Municipal tax: Residential taxes on individual and companies, property taxes on land and buildings, etc.
- Money transferred: Funds received from municipal savings
- Miscellaneous revenue: Interest on savings, etc.
- Balance brought forward: Funds carried over from the previous term
- Treasury disbursement: Contributions and subsidies from the national government
- Prefectural disbursement: Contributions and subsidies from the prefectural government

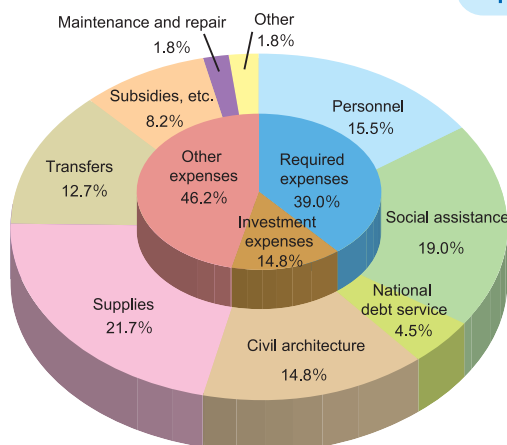
Expenditures (by purpose)



Definitions

- Public welfare: Money used for social projects
- Public works: Money used for maintaining roads and waterways
- Administration: Money used for the municipal offices
- Education: Money used for elementary and junior high education and cultural purposes
- Sanitation: Money used for preventing sickness and treating waste
- National debt service: Money used to pay down loans and interest
- Fire prevention: Money used for fire prevention facilities, etc.
- Agriculture: Money used to promote agriculture and forestry
- City Council: Money used to operate the City Council

Expenditures (by category)



Definitions

- Personnel: Wages and allowances for employees
- Social assistance: Money for supporting people eligible for welfare or child assistance
- Civil architecture: Money for making roads, school, parks, etc.
- Supplies: Money required for operations
- Required expenses: Obligations for the city including personnel, social assistance, and servicing public debt
- Investment expenses: Money spent on buildings, roads and other facilities that will remain beyond the current fiscal period

Comparing the Municipal Budget to a Family Budget

The city has many sources of revenue and expenses that differ somewhat from a normal household so it doesn't line up exactly, but here is what a monthly balance book might look like if we made the city into a household with an annual income (including allowances) of 5 million yen.

Income			
		Details	Amount
Monthly wage			417,000 yen (-16,000 yen)
Details	Basic wages	City taxes	307,000 yen (-5,000 yen)
	Various allowances	Local transfer taxes, national/prefectural expenditures, etc.	110,000 yen (-11,000 yen)
Part-time income		Service costs, fees, assorted income, etc.	42,000 yen (+6,000 yen)
Savings		Money transferred	71,000 yen (-4,000 yen)
Loans from banks		Municipal bonds	12,000 yen (-4,000 yen)
Total			542,000 yen (-18,000 yen)

Expenditures		
	Details	Amount
Food, etc.	Personnel	84,000 yen (-6,000 yen)
Medical fees	Social assistance	103,000 yen (+6,000 yen)
Loan payments	National debt service	25,000 yen (+1,000 yen)
Utilities	Supplies	117,000 yen (+4,000 yen)
Home construction/repairs	Investments and maintenance	90,000 yen (-19,000 yen)
Allowances for children	Transfers and capital investment	73,000 yen (-2,000 yen)
Other	Subsidies, etc.	50,000 yen (-2,000 yen)
Total		542,000 yen (-18,000 yen)

※The value in parentheses is the difference from the budget revision from last June.

Revenue: ...

Wages decreased greatly due to losses in basic wage and allowances. Although part-time wages increased, money borrowed from banks decreased with lower expenses related to construction and repair.

Expenses: ...

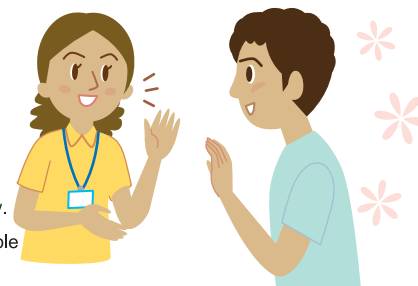
Home construction and repair (investment expenses) fell significantly. In addition, despite medical fees and utilities increased, food costs decreased resulting in a decrease from the amount used last year.



KIA Call for participation: meeting of volunteers

Looking for people interested in international exchange and multiculturalism to start volunteer activities.

- Eligibility** Anyone interested in international exchange or multiculturalism
- Date/time** May 24 (Thu) 2012 from 19:00
- Venue** Komaki Kominkan 4F Chess Room
- Participation fees** Free ※Please contact in advance
- Application** Please contact the Komaki International Association (KIA) Administration Office directly.
Komaki Civic Hall 4F, 2-107 Komaki, Komaki City, 9:00 to 17:00 (Not available on Sundays, Mondays, holidays or between 12:00 and 13:00)



Application/Inquiries

Komaki International Association (KIA) Administration Office
TEL0568-76-0905 FAX0568-71-8396 mail kia@ma.ccnw.ne.jp

KIA Call for participants in exchange party

Have light exchange with people from various countries. Lots to enjoy including quizzes, music and lunch buffet.

- Date/time** May 20 (Sun) 12:30 to 13:50 (scheduled)
- Venue** Komaki Community Hall (Meitetsu Komaki Hotel 3F)
- Eligibility** City residents, workers or students interested in multicultural exchange
- Capacity** First 30 (requires reservation)
- Participation fees** 1,000 yen
- Application** May 8 (Tue) to 16 (Wed) 2012, excluding Sundays, Mondays, holidays or between 12:00 and 13:00. Attach fee, and bring directly to Komaki International Association (KIA)



Inquiries Komaki International Association (KIA) Administration Office TEL0568-76-0905

KIA International Exchange Through Food

Let's enjoy cooking homestyle Brazilian cuisine!



Instructor: Lucilene da Silva

- Date/time** June 2 (Sat) 10:00 to 13:30
- Venue** Komaki Civic Hall 3F Cooking Room
- Eligibility** Local residents, workers, students and KIA member at least 18 years old
- Capacity** First 24 people
- Participation fees** KIA Members: 200 yen, General: 500 yen (you can join KIA at the event)
- What to bring** Apron, Towel
- Application** Apply directly to Komaki International Association (KIA) office with the fee, between May 9 (Wed) and May 24 (Thu) 9:00 to 17:00 (excluding Sundays, Mondays, Holidays and 12:00 to 13:00)



Inquiries Komaki International Association (KIA) Administration Office TEL0568-76-0905

1st term Japanese Lessons-Workplace Japanese Conversation

1st Term Japanese Language Classes

Study at your own level

A~D... Beginner

E~G... Lower Intermediate

H... Intermediate

I... Advanced

Workplace Japanese

Come learn Japanese language and manners that you can use on the job and in your everyday life!
(Grammar, listening, conversation, hiragana, katakana, kanji)

Date/time 1st Term Japanese Language Classes:
Every Sunday

Dates May 13 to August 19, 2012

Capacity 16 persons per class

Venue Chess or Rose Room, 4F Komaki Civic Hall

Fee 1,000 yen (not included in 2,000 yen 2012 Komaki International Association (KIA) yearly membership fee)

Application Apply directly to the KIA office

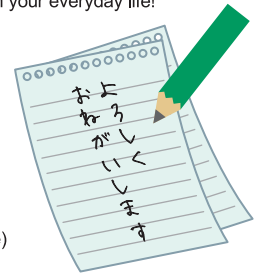
Eligibility Foreigners

What to bring Pen or pencil

Workplace Japanese: Every Saturday

May 12 to August 18, 2012 (12 times)

16 persons per class



Japanese classes								
Sunday								
Beginner				Lower Intermediate			Intermediate	Advanced
A	B	C	D	E	F	G	H	I
13:00 to 15:00	15:10 to 17:10	15:10 to 17:10	13:00 to 15:00	10:30 to 12:30	8:30 to 10:30	10:30 to 12:30 (Study for JLPT3)	8:30 to 10:30 (Study for JLPT2)	17:20 to 19:20 (Study for JLPT1)
Asakura	Matsuoka	Asakura	Matsuoka	Matsuoka	Matsuoka	Asakura	Asakura	Asakura
			① May 13					
			② May 20					
			③ May 27					
			④ Jun 3					
			⑤ Jun 10					
			⑥ Jun 24					
			⑦ Jul 1					
			⑧ Jul 8					
			⑨ Jul 15					
			⑩ Aug 5					
			⑪ Aug 12					
			⑫ Aug 19					

Workplace Japanese		
Saturdays		
Class	Lower Intermediate	Advanced
Time	15:00 to 17:00	17:00 to 19:00
Instructor	Kaori Asakura	Kaori Asakura
Schedule	① May 12	① May 12
	② May 19	② May 19
	③ May 26	③ May 26
	④ Jun 2	④ Jun 2
	⑤ Jun 9	⑤ Jun 9
	⑥ Jun 23	⑥ Jun 23
	⑦ Jun 30	⑦ Jun 30
	⑧ Jun 7	⑧ Jul 7
	⑨ Jun 14	⑨ Jul 14
	⑩ Aug 4	⑩ Aug 4
	⑪ Aug 11	⑪ Aug 11
	⑫ Aug 18	⑫ Aug 18

Inquiries

Komaki International Association (KIA) Administration Office

TEL0568-76-0905 FAX 0568-71-8396 mail: kia@ma.ccnw.ne.jp

KIA Recruiting foreign language students

Try out basic conversation with native teachers.

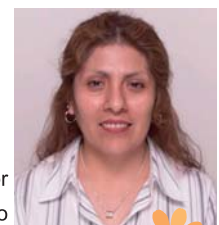
Introductory Spanish

Jun 5 (Tue) to Aug 7 (Tue), 2012 - total of 10 times

Every Tuesday 13:30 to 15:30

Spanish Instructor

Nelly Chozo



Introductory Korean

Jun 1 (Fri) to Aug 3 (Fri), 2012 - total of 10 times Every Friday 13:00 to 15:00

Instructor: Malsun Kim



Venue Chess Room, 4F Komaki Civic Hall

Eligibility KIA members or residents, students or workers in Komaki (18 or older)

Capacity 16 each (first come first served)

Fees Members 3,000 yen, General 6,000 yen (includes textbook)

Application Apply directly to Komaki International Association with the fees from May 9 (Wed) to May 25 (Fri), 2012

※Excluding 12:00 to 13:00, Sundays, Mondays, and Holidays



Inquiries

Komaki International Association (KIA) Administration Office TEL0568-76-0905

The 6th Komaki Comprehensive Plan # 4



In the March edition we explained the five urban development goals. Regarding efforts towards the five urban development goals in the 6th Komaki Comprehensive Plan, Komaki City has taken responsibility to implement the determined categorized plans.

In order to verify the progress of these efforts, we have set target values and visions of what the future should look like.

Categorized Plan 1 Resident Lifestyles — Basic measures 2: Interaction —

●Future Vision

Citizens should have a wealth of opportunities to interact and these bonds should grow stronger. Mutual understanding and interaction should cross differences in ethnicity, language, culture and lifestyle to build a community that supports each other. With increased interest in exchange with municipalities domestic and abroad, our residents should actively engage in intercity connections including international exchange organizations and civic action groups.

●Target Value

Index		Current Value	Target Value	
			2013	2018
Ratio of citizens and children enjoying or satisfied with the City Festival and Heisei Summer Festival	Citizens	45.8% ▶	50% ▶	55%
	Children	81.0% ▶	83% ▶	85%
Annual participants in activities related to international exchange		1,984 ▶	2,100 ▶	2,200

The 6th Komaki Comprehensive Plan is a plan for urban development with cooperation between citizens and the municipal government. Thank you for your cooperation.

Inquiries Municipal Governance Strategy Section TEL0568-76-1105

Health and Welfare Festival in Komaki

Date/time May 13 (Sun) 9:30 to 16:00

※Note: All booths open at 10:00 and close at various times.

Venue Komaki Civic Center, Komaki Civic Hall

Health Festival

Check your own health

- Health counseling with doctors and physicians
- Measure your health: height, weight, blood pressure and more
- Breast cancer examination (40 years old or older) ※Fee required
- Osteoporosis examination (30 years old or older) ※Fee required
- Chest x-ray examination (15 years old or older) ※Free of charge
- Dental Corner, etc.
- Stress Check Corner

Reservation required

New

※Hosted checkups subject to change

Nursing Care Exhibition

Introducing nursing insurance and services

- Visit Bathing Demonstration (from 11:00)
- Information related to facilities and home services

Welfare Exhibition

Find out how you can contribute

- Introduction and experience of volunteer group activities
- Bazaar, etc. by welfare facilities

Inquiries Health Center TEL0568-75-6471

Social Welfare Association TEL0568-77-0123

Medical checkup information

Mother/child Health Examination Calendar

※Make sure to bring your Maternal and Child Health Handbook.



Examination	Schedule	Venue	Time	Eligibility/Description/Application/etc.
Health examinations and BCG vaccinations for 4-month-old infants, dental examinations for mothers	May 15 (Tue)	Health Center	Reception 13:05 to 13:55	Born between Jan 1 and 10, Heisei 24
	May 22 (Tue)			Born between Jan 11 and 16, Heisei 24
	May 29 (Tue)			Born between Jan 17 and 24, Heisei 24
	Jun 5 (Tue)			Born between Jan 25 and 31, Heisei 24
Health examinations for 18-month-old infants	May 11 (Fri)	Health Center	Reception 13:05 to 14:15	Born between Nov 1 and 12, Heisei 22
	May 18 (Fri)			Born between Nov 13 and 20, Heisei 22
	May 25 (Fri)			Born between Nov 21 and 30, Heisei 22
Dental examinations for children aged 2 years, 3 months	May 10 (Thu)	Health Center	Reception 9:00 to 10:10	Born between Feb 1 and 15, Heisei 22
	May 31 (Thu)			Born between Feb 16 and 28, Heisei 22
Health examinations for 3-year-old children	May 9 (Wed)	Health Center	Reception 13:05 to 14:15	Born between May 1 and 12, Heisei 21
	May 16 (Wed)			Born between May 13 and 22, Heisei 21
	May 30 (Wed)			Born between May 23 and 31, Heisei 21
Niko niko cavity prevention class <div>Reservation required</div>	May 30 (Wed)	Health Center	10:00 to 11:00	20 Children that have begun to grow teeth and their parents ● Fees: Free ● Application: Health Center
Baby food class (Initial Gokkun (swallowing) class) <div>Reservation required</div>	May 9 (Wed)	Health Center	10:00 to 11:00	27 sets of parents and children 4months after giving birth ● Fees: Free ● Application: Health Center
Baby food class (Later kami-kami (biting) class) <div>Reservation required</div>	May 25 (Fri)	Health Center	10:00 to 11:00	21 sets of parents and children 9 months after giving birth ● Fees: Free ● Application: Health Center
Class for new moms and dads	May 2 (Wed)	Health Center	14:00 to 16:00	30 Komaki resident pregnant women and their husbands (woman can also participate alone) ● Description: Living with a baby, role of the father, nutrition during pregnancy, oral health, pregnancy experience, doll holding experience ● What to bring: Parent-child (maternal and child) health handbook, writing utensils ● Application: Health Center
Nursing counseling <div>Reservation required</div>	May 7 (Mon)	Health Center	13:00 to 16:00	● Fees: Free ● Application: Health Center
	May 15 (Tue)		9:00 to 12:00	
	May 22 (Tue)			
	May 23 (Wed) May 29 (Tue)			
Parenting, pregnancy, and giving birth health counseling	May 11 (Fri)	Kitasato Jidokan	10:00 to 11:15	● Description: Consultation regarding worries/concerns for raising children, body measurements, blood pressure measurement, urine inspection (optional) ● Fees: Free
	May 25 (Fri)	Shinooka Jidokan		
Baby visit	About 2 or 3 months after birth, a health contact and veteran health contact will come visit your home with a few gifts to congratulate you on the birth of your baby. (You will be contacted in advance to set a convenient time.)			

※You will be sent a letter in advance if it applies to you. Please check the reception time details on the letter.

※Phone counseling is always available on days other than your counseling date. Please feel free to call.

※Dental checkup is provided for pregnant women. For details, see the back of Adult Dental Checkups.

Inquiries Health Center TEL.0568-75-6471

Medical checkup information

Inquiries

Health Center

TEL.0568-75-6471

Group screening tests for cancer and osteoporosis

Type	Schedule	Time	Venue	Eligibility/Description/Application/etc.
Breast cancer (Mammography)	May 13 (Sun)	10:00 to 15:30	Komaki Civic Hall	Registered Komaki residents over 40 years born in an even year and those that did or will turn 40 that were born in Showa 47. (Examinations will also be given to those born in odd years who did not receive an examination in 2011.) ● Fee: 1,200 yen
Osteoporosis screening	May 13 (Sun)	10:00 to 15:30	Komaki Civic Hall	Registered Komaki residents over 30 years old ● Fee: 830 yen
Chest X-ray screening	May 13 (Sun)	10:00 to 15:30	Komaki Civic Hall	Registered Komaki residents over 15 years old ● Fees: Free

※Screening tests for stomach cancer, colorectal cancer, lung cancer and osteoporosis will each be held once in a period of May through March of the following year.

※Screening tests for uterine cancer and breast cancer (chest X-rays) can now be done once every two years. (According to the Health, Labour and Welfare Ministry's Vital Cancer Prevention Education and Cancer Screening Test Guidelines.)

Immunization Calendar

※Make sure to bring your Maternal and Child Health Handbook.



	Type of Immunization	Venue	Schedule	Eligibility/Description/Application/etc.
Individual Immunization	Hib	Designated local medical institution	Always available	Eligibility: From 2 months old to 4 years old The number of immunizations varies depending on when they were started. (Up to four times) People wanting immunizations can make a reservation with a medical facility. Pre-examination forms are available at local medical facilities.
	Infant pneumococcal pneumonia			
	Cervical cancer			Eligibility: Girls from elementary grade 6 to junior high grade 3 3 times (the vaccination period varies by vaccine). The immunization is not free for persons older than the covered ages. People wanting immunizations can make a reservation directly with a medical facility. Pre-examination forms are available at local medical facilities.
	Chicken pox, mumps	Medical institution		From 1 year old until entering elementary school (once) People wanting immunizations can make a reservation directly with a medical facility.
Group Immunization	Polio	Ajioka Community Center Kitasato Community Center Tobu Community Center Civic Hall (Shimin Kaikan)	May 16 (Wed) May 24 (Thu) May 25 (Fri) May 30 (Wed)	From 3 months old to 7 and a half years Reception: 14:00 to 15:00

Partial subsidy of immunization costs

Pneumococcal pneumonia vaccine subsidy 5,000 yen ※Subsidy is one time for one person	Date Medical institution	Always available	Immunization can be reapplied based on a doctor's decision if at least 5 years have passed. Komaki residents 75 years old or older determined by a physician to have chronic respiratory or heart disease, diabetes, kidney malfunction, a removed spleen or liver damage.
--	-----------------------------	------------------	--

Edited
and
Published

Komaki City Hall Department of Civil Industry Life Division

〒1-1 Horinouchi, Komaki-shi, Aichi-ken 485-8650 TEL: 0568-76-1173 FAX: 0568-72-2340

<http://www.city.komaki.aichi.jp/contents/90000011.html>

※Please see the relevant service counter for more details regarding any of the items contained herein.



Printed on recycled paper for the sake of the environment.

Printed with soy ink for the sake of the environment.