

Life Information News KOMAKI

2
2013



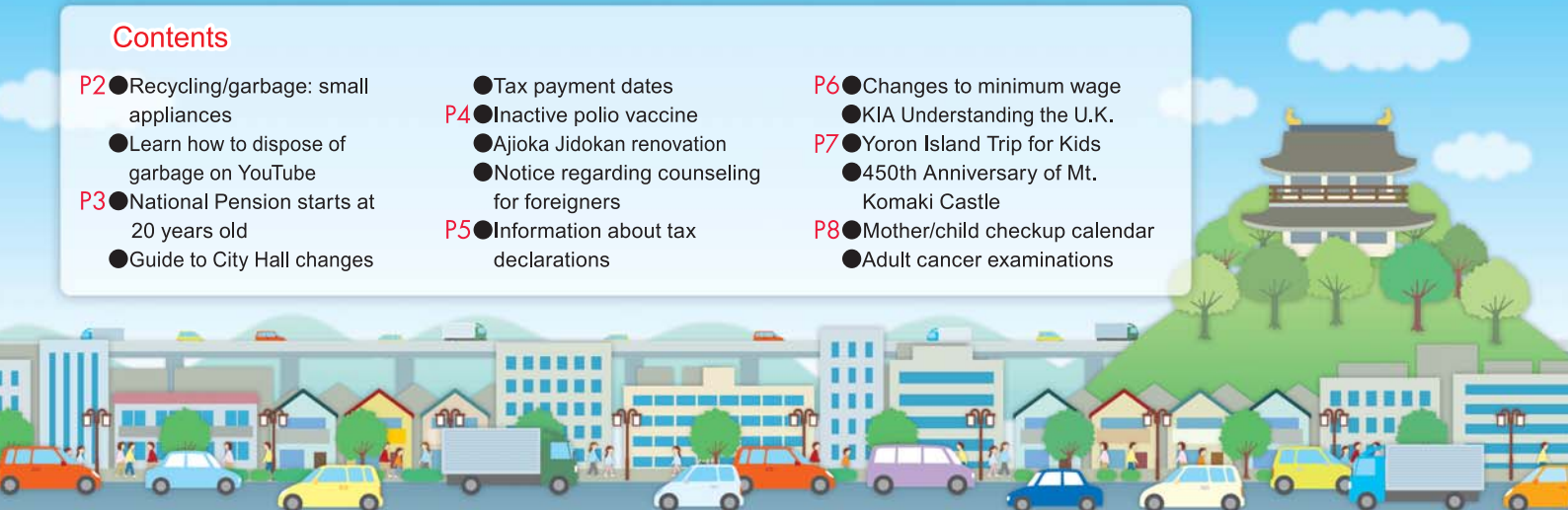
KIA Preschool

Contents

- P2** ● Recycling/garbage: small appliances
● Learn how to dispose of garbage on YouTube
P3 ● National Pension starts at 20 years old
● Guide to City Hall changes

- Tax payment dates
P4 ● Inactive polio vaccine
● Ajioka Jidokan renovation
● Notice regarding counseling for foreigners
P5 ● Information about tax declarations

- P6** ● Changes to minimum wage
● KIA Understanding the U.K.
P7 ● Yoron Island Trip for Kids
● 450th Anniversary of Mt. Komaki Castle
P8 ● Mother/child checkup calendar
● Adult cancer examinations



Sorting/setting out recyclables and garbage

Please dispose of small appliances with metals.



Ecorin

Small home appliances includes



All items that move that are powered by electricity or batteries

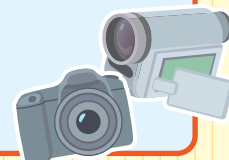
Air cleaners
Blenders
Boom boxes
Calculators
Cameras
Coffee makers
Convection ovens
Digital cameras
Dryers
Electric cords

Electric frying pans
Electric lamps
Electric ranges
Electric razors
Electric stoves
Electric toothbrushes
Electric water pots
Fans
Fax machines
Flashlights

Futon dryers
Gas convection ovens
Humidifiers
Irons
Kerosene fan heaters
Microwave ovens
Mouses
Phones
Portable gas stoves (with battery spark)
Portable music players

Portable stereos
Printers
Radios
Remote controls
Rice cookers
Scales
Sewing machines
Stereo systems
Stoves
Toaster ovens

Toasters
Vacuum cleaners
VCRs
Ventilation fans
Video cameras
Video game consoles
Word processors



Disposal procedure

Place in the recyclable material collection bag (green) and place at the collection location on the day for metals.



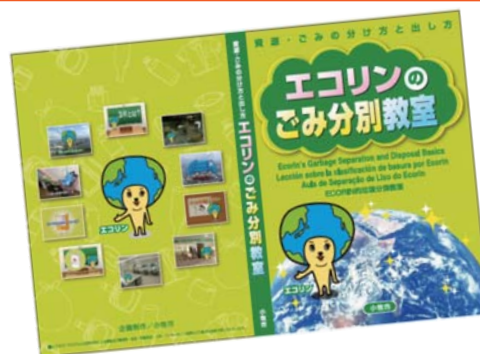
- Items containing fabric, wood, etc. (such as electric carpets)
 - Computers ● Bulky waste ● Cellphones
 - Items covered by the home appliance recycling law (TVs, air conditioners, washing machines, fridges, freezers, clothes driers)
- ※ For details, please contact the Waste Management Section.

Not covered



Find out more about garbage and recycling on YouTube

You can view the movie "Econrin's Garbage Separation and Disposal Basics" in Portuguese, Spanish, English, Chinese and Japanese on Komaki City's website and learn about dividing and disposing of recyclables and garbage and the 3Rs (reduce, reuse, recycle).



Inquiries

Waste Reduction Promotion Section, Waste Management
TEL0568-76-1187

❁ ❁ Nation Pension for all persons from 20 years old ❁ ❁

National Pension is a system to provide a common basic pension to all citizens to ensure livelihood after becoming elderly or in case of sickness. In order to provide this service all persons living in Japan between ages 20 and 60 are required to pay national pension premiums (basic pension) regardless of occupation.

On your 20th birthday, an application form will be sent by the Nagoya North Branch Office; ensure completion of the application procedure. If you are unable to pay premiums, persons under 30 years of age or students can use a payment deferment system. Please contact us for more details.

3 Benefits of the National Pension (Basic Pension)

- ❁ 1. Support from when you become elderly. **Basic pension for the elderly**
- ❁ 2. Support when you become sick or injured. **Basic disability pension**
- ❁ 3. Support for children and spouse with children if you die **Basic survivor pension**

Inquiries Japan Pension Service Nagoya North Branch Office TEL052-912-1214
Health Insurance & Pension Division TEL0568-76-1124



Municipal functions stop at the old City Hall building

As part of the renovations to the East Building, the urban planning and waterworks reception spaces moved to the first and second floor of the East Building and the information systems division will move to the fifth floor of the Main Building from the old City Hall building. All municipal services will be stopped at the old City Hall building. These services will be accessible at the Main City Hall Building and East Building.

These services are available on the first and second floor of the East Building from Friday, January 4.

Next tax payment deadline: Feb 28 (Thu)

- Fixed Asset & City Planning Tax (4th Term)
- Nursing Care Insurance Fees (8th term)

- National Health Insurance Tax (9th term)
- Late-Term Medical Insurance for the Elderly (7th term)

Submit your payments promptly!

Avoid missed payments by setting up direct debit payments from your bank account. If you have already set up direct debit payments for your taxes, be sure that your account has sufficient funds available by the day before payment is due.

If your payment is late ...

If payment is late you will be sent a notification by the City Hall. Notices are also sent to person paying in payments. If you are paying in payments, continue to do so. You may be contacted by an employee of the city by phone to give you instructions. You may have a sound reason for your delayed payment, but the City Hall Tax Office will not know this if you do not consult with or contact us. Please notify us of any special circumstances.

If you are too busy during the day on weekdays to make your payment...

The main building's second floor will be open to answer tax-payment related questions and accept payments.

Hours: Feb 10 (Sun)/Feb 24 (Sun) 8:30 to 17:15

Tax payments will be accepted at the Komaki Station branch office every day. Please stop by at your convenience. **8:30 to 17:15**

You may pay your taxes at a local convenience store if your payment slip has a barcode. ※ Only effective during the payment period.



Inquiries Tax Office TEL0568-72-2101(Rep.) Ext.276~279 TEL0568-76-1117 / 0568-76-1118(Direct)

Additional inactive polio vaccination has started

Inactive polio vaccine was not initially available as a regular immunization, but it is now possible to have as both additional vaccination or as a regular immunization. Although “a fee is required for additional vaccination” was written on the examination notice, depending on your age you may be eligible for free vaccination. At least 6 months interval after the third vaccine is required.

Inquiries Komaki Health Center TEL0568-75-6471



Ajioka Jidokan moved and open from Jan 15 (Tue)

NEW!

The nickname of the facility is Parumo Ajioka

Based on the opinions of the local resident organization “Ajioka Jidokan o Tsukuru Kai”, the new Jidokan is a center for supporting local parenting with spaces for local exchange including play and study for children of all ages and open to all generations. The nickname, “Parumo Ajioka”, was chosen from the 149 responses received.

“Parumoa” is made up of the words “pal” and “more” with the vision for friends to come together to play and study, enjoy deeper bonds and grow in this place.



Facility Overview

Floor space: Total indoor 978.86m², Open-air terrace: 47m²

Steel framed, 2 floors Playrooms, parenting support rooms, parent's waiting room, local exchange room, music room, classrooms, and more

Address 557-1 Oaza-Iwasaki

Contact ☎75-4999

Hours 9:30 to 17:30

※ Jr. High Students until 19:00,

High School Students until 21:00

Closed Year end/New Years (Dec 28 to Jan 4)



Inquiries Child Welfare Division TEL0568-76-1129

Notice regarding counseling for Foreigners

**Life Exchange Section (Seikatsukoryu-ka),
Main Government Office Bldg 2F, City Hall**

9:00 to 17:00 (12:00 to 13:00 excluded)

Portuguese: Mon-Fri

Spanish & English: Mon/Tues/Thurs

In addition, the Health Insurance and Pension Department and Child Welfare Division have staff available to help in Portuguese (9:00 to 17:00) the Welfare Division in Portuguese (9:30 to 16:30) and the Citizen Division in Chinese (9:00 to 16:30).

Inquiries Life Exchange Section TEL0568-76-1173

Notice Regarding Final Tax Declaration for 2012 Counseling Venue

Venue **Komaki Civic Hall** (Komaki Civic Hall South) 2-107 Komaki, Komaki City

Dates **Feb 14 (Thu) to Apr 1 (Mon)**

Not open on weekends or holidays. Counseling will be available on Feb 24 (Sun) and Mar 3 (Sun).

★Income and gift taxes must be declared and paid by Mar 15 (Fri), consumption taxes and local consumptions taxes must be declared and paid by sole proprietors by Apr 1 (Mon).

★During this period, the tax office and city hall will not give direction or counseling related to preparation of declaration forms.

Time 9:00 to 17:00

Depending on how busy the venue is, counseling may finish early. Please come by 16:00.

Transportation facilities Come by city bus (on either the Komaki or Ajioka Junkan (clockwise or counterclockwise) routes)
Bus stop: Shiminkaikanmae

What to bring: Meitetsu → About 15 minutes walk from Meitetsu Komaki Station
Persons with income from wages not adjusted before year end:
Persons with wages from 2 or more sources

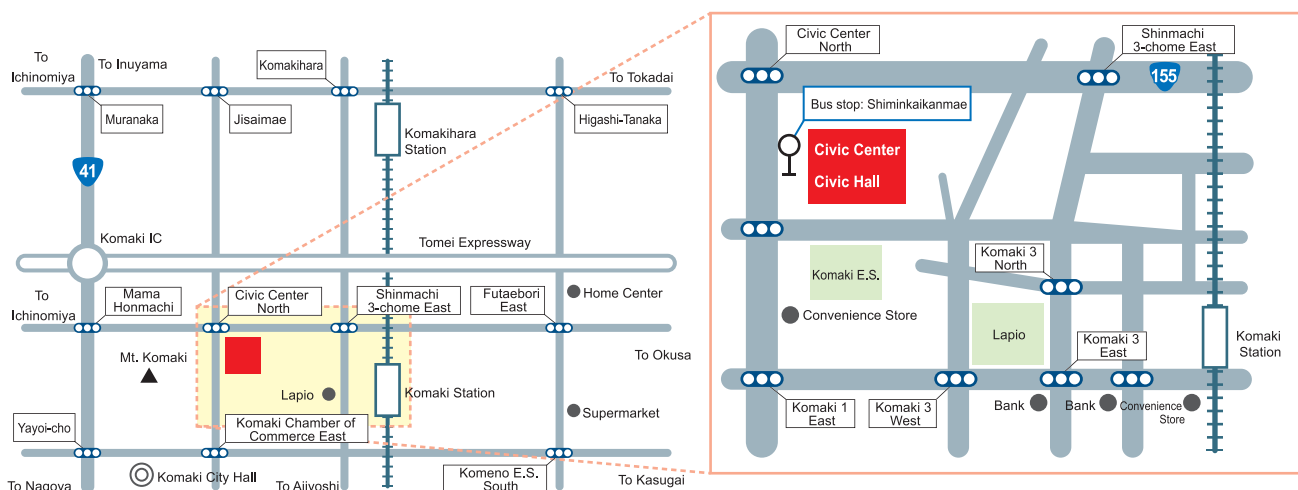
- ☐ Income deductions certificate (Gensenchoshuhyo) (Original copy)
- ☐ Documents certifying social insurance premiums
- ☐ Documentation certifying payment of life insurance and earthquake insurance premiums
- ☐ Medical expense receipts
- ☐ Personal seal



※Other documentation may be required depending on the content of your declaration.
If unsure, contact the Komaki Tax Office.

You can prepare your tax declaration without going to the tax office on your home PC. You can prepare declaration forms for income tax related final tax declaration, blue form declaration calculation sheet, accounting sheet, consumption tax declaration form and gift taxes at the Final Tax Declaration Form Preparation Corner.
For details visit <http://www.nta.go.jp>

Inquiries **Komaki Tax Office 1-424 Chuo, Komaki City TEL0568-72-2111**
★Phone calls are handled by an automated voice system. Please take care in dialing.



Prefectural specified (per-industry) minimum wage changes

The specified (per-industry) minimum wages for 7 industries applied to designated industries in Aichi have been effectively changed from Dec 16, 2012. The minimum (hourly) wages in Aichi are now as given below in line with the changes of Oct 1 to the Aichi Minimum Wage.

Minimum wage name	Hourly rate	Effective as of
Aichi Minimum Wage	758 yen	Oct 1, 2012

The specified (per-industry) minimum wage is as follows:

Minimum wage name	Hourly rate	Effective as of
Steel industry minimum wage	874 yen	Dec 16, 2012
General device production minimum wage	849 yen	
Electrical device production minimum wage	815 yen	
Transportation device production minimum wage	854 yen	
Precision device production minimum wage	804 yen	
Commercial retail industry minimum wage	792 yen	
Automotive (new vehicle) retail industry minimum wage	836 yen	Dec 16, 2007
Automotive parts and accessories retail industry minimum wage	800 yen	

※For more details, visit the website of the Aichi Labour Bureau: <http://aichi-roudoukyoku.jsite.mhlw.go.jp/>

Inquiries

Nagoya North Labour Standards Supervisory Office
TEL052-961-8653

KIA

Get to know the United Kingdom!

Junior Plan

The World's London Olympics

Enjoy it again with an English Quiz

Date/time Mar 10 (Sun), 2013 14:00 to 16:00

Venue Komaki Civic Hall 4F Audio-Visual Room

Capacity 15 people

Eligibility Persons living, working or studying in Komaki or KIA members between elementary grade 5 and 18 years old.

Application deadline Feb 6 (Wed) to Feb 27 (Wed) 2013 from 9:00 to 17:00
 ※Closed Sundays, Mondays, holidays and 12:00 to 13:00
 ※Apply by Fax or email with your name, age or school grade, address, phone number, and whether you are a KIA member.

Free of charge



Speaker: Mr. Ben Allison

Inquiries/Application

Komaki International Association (KIA) Administration Office,
Komaki Civic Hall 4F
 TEL0568-76-0905 FAX0568-71-8396 E-mail: kia@ma.ccnw.ne.jp

37th Children's expedition to Yoron Island

Come with us to the natural environs of Yoron Island, to the south near Okinawa, where you can take part in outdoors activities and stay with friends from all over Japan, building rafts, exploring caves and more! Deepen friendship that goes beyond language and lifestyle by sharing adventure and activities with foreign elementary students living in Japan, taking a first step to international understanding.

Call for participation

Date/time Mar 26, 2013 (Tue) to Apr 1 (Mon), seven days and six nights

Venue Yoron Town, Oshima District, Kagoshima Prefecture

Eligibility Elementary students grades 2 to 6 ※ Includes foreign elementary students

Capacity 200 Japanese elementary students and 100 foreign elementary students residing in Japan

Fee 135,000 yen (※If participating from Chubu International Airport)

Cut off Apply by Mar 6 (Wed) to the International Youth Association of Japan K.S.K.K.



Inquiries/Application

International Youth Association of Japan K.S.K.K. 5-7-8-921 Mita, Minato City, Tokyo
TEL03-6459-4661 Fax03-6459-4633 E-mail: info@kskk.or.jp

Oda Nobunada Mt. Komaki Castle Building 450 year memorial

Oda Nobunaga, noted Japanese historical figure, established the castle on Mt. Komaki 450 years ago this year. Many events will be held in memorial in 2013. We hope you will come out and have a good time with friends and family!



January	Celebrating the first sunrise of the new year ~Starting new dreams and challenges~ 1 (Tue)
	Museum Exhibition: Writing on stonework and Saguma ~Bridging 450 years~ 18 (Fri) to Feb 20 (Wed)
	Lecture: Armor of the Three Heroes (Nobunaga, Hideyoshi, and Ieyasu): from the history of Mt. Komaki 26 (Sat)
April	Mt. Komaki Sakura Festival ~The beautiful blossoms of Mt. Komaki Castle~ 1 (Mon) to 10 (Wed)
	Children's play week ~Follow after Nobunaga!~ Until May
May	Museum Exhibition ~The ladies in the life of Nobunaga~ Until June
	Lesson by local resident ~Nobunaga, soldier of fortune and Mt. Komaki Castle~ (Total of 5 times) Until June
June	Shimin Shiki no Mori Rose and Hydrangea festival ~Dreams and Challenge with Flowers and Green~ 1 (Sat) to 16 (Sun)
July	Museum Exhibition Junior Club ~What kind of person was Oda Nobunaga?~ Until August
	Komaki Heisei Summer Festival 27 (Sat) and 28 (Sun)
September	Komaki Nobunaga Festival 21 (Sat), 22 (Sun) and 23 (Holiday) ○Mt. Komaki Otsukimi Festival ~Nobunaga admired the same harvest moon~ 21 (Sat) ----- ○Mt. Komaki Torchlight Noh Theater ~Relaxing in peaceful repose~ 21 (Sat) ----- ○Mt. Komaki Landmark Fest 2013 21 (Sat) ----- ○Nobunaga Dream Forum: Nobunaga Urban Development ~Gateway to a new era~ 22 (Sun)
	Museum Exhibition: the Stonework of Mt. Komaki Castle ~Japan's oldest stonework~ Until October
	Komaki City Festival ~Dreams and Challenge: 450th Anniversary~ 19 (Sat) and 20 (Sun)
October	Komaki Station Illumination ~Shining Streets of the Nobunaga Dream~ Until December
November	Protecting Cultural Treasure: Know your town, Komaki ~The history and culture of our city~ Educational Exhibition
December	Oda Nobunaga Theater: Warring States Music and Scroll Art (visions of Mt. Komaki Castle) ~Beyond the times of Nobunaga~

Inquiries

Mt. Komaki Castle 450 Anniversary Project Promotion Office
TEL0568-76-1689

※The above schedule is subject to change

Medical checkup information

Inquiries Health Center TEL0568-75-6471

Mother/child Health Examination Calendar

※Make sure to bring your Maternal and Child Health Handbook.
 ※You will be sent a letter in advance if it applies to you.
 Please check the reception time details on the letter.

Please check the reception time details on the letter.				
Examination	Schedule	Venue	Time	Eligibility/Description/Application/etc.
Health examinations and BCG vaccinations for 4-month-old infants, dental examinations for mothers	Feb 12 (Tue)	Health Center	13:05 to 13:55	Born Oct 1 to 6, 2012
	Feb 19 (Tue)			Born Oct 7 to 16, 2012
	Feb 26 (Tue)			Born Oct 17 to 24, 2012
	Mar 5 (Tue)			Born Oct 25 to 31, 2012
Health examinations for 18-month-old infants	Feb 1 (Fri)	Health Center	13:05 to 14:15	Born Aug 1 to 11, 2011
	Feb 8 (Fri)			Born Aug 12 to 22, 2011
	Feb 15 (Fri)			Born Aug 23 to 31, 2011
Dental examinations for children aged 2 years, 3 months	Feb 7 (Thu)	Health Center	9:00 to 10:10	Born Nov 1 to 15, 2010
	Feb 21 (Thu)			Born Nov 16 to 30, 2010
Health examinations for 3-year-old children	Feb 6 (Wed)	Health Center	13:05 to 14:15	Born Feb 1 to 7, 2010
	Feb 13 (Wed)			Born Feb 8 to 15, 2010
	Feb 27 (Wed)			Born Feb 16 to 28, 2010
Niko niko cavity prevention class	Feb 27 (Wed)	Health Center	10:00 to 11:00	20 children starting to get teeth ●Fees: Free ●Application: Health Center
Baby food class (Initial Gokkun (swallowing) class)	Feb 6 (Wed)	Health Center	10:00 to 11:00	27 sets of parents and children 4 months old ●Fees: Free ●Application: Health Center
Baby food class (Later kami-kami (biting) class)	Feb 22 (Fri)	Health Center	10:00 to 11:00	21 sets of parents and children 9 months old ●Fees: Free ●Application: Health Cente
Class for new moms and dads	Feb 24 (Sun)	Health Center	10:00 to 12:00	30 Komaki resident pregnant women and their husbands (woman can also participate alone)
	●Description: Information about life with a baby, the role of the father, nutrition during pregnancy, dental health and parenting in Komaki ●What to bring: Parent-child (maternal and child) health handbook ●Application: Health Center			
Nursing counseling	Feb 4 (Mon)	Health Center	13:00 to 16:00	●Fees: Free ●Application: Health Cente
	Feb 13 (Wed), 19 (Wed)		9:00 to 12:00	
Parenting, pregnancy, and giving birth health counseling	Feb 8 (Fri)	Seibu Jidokan	10:00 to 11:15	●Content: Consultation regarding worries/concerns for raising children, body measurements, blood pressure measurement, urine inspection (optional) ●Fees: Free
	Feb 15 (Fri)	Komaki Minami Jidokan		
	Feb 19 (Tue)	Ajioka Jidokan		
	Feb 26 (Tue)	Shinooka Jidokan		
Baby visit	About 2 or 3 months after birth, a health contact and veteran health contact will come visit your home with a few gifts to congratulate you on the birth of your baby. (You will be contacted in advance to set a convenient time.)			

母子手帳

Examinations for adults

※From Heisei 19 we have promoted screening once every two years based on even and odd years (using the Japanese calendar). Thank you for your understanding and cooperation.

Examination	Schedule	Time	Venue	Eligibility/Description/Application/etc.
Screening test for stomach cancer (Abdominal X-ray)	Mar 4 (Mon)	9:00 to 11:00	Health Center	Registered Komaki residents over 40 years old ●Capacity: 40 people ●Fees: 930 yen ●Application: Health Center
Screening test for colorectal cancer (Testing of the stool for occult blood)	※A feces sample container will be collected on the day stomach cancer screening is implemented.			Registered Komaki residents over 40 years old ●Fees: 520 yen ●Application: Health Center
Screening test for breast cancer (Mammography screening)	Mar 11 (Mon)	9:00 to 15:30	Health Center	Registered Komaki residents over 40 years old ①Persons over 40 born in even years* ②Persons born in odd years* that did not receive an examination in 2011 ③Persons turning 40 that* were born in 1972 ●Capacity: 85 people ●Fee: 1,200 yen ●Application: Health Center Persons that have received a free coupon may apply.
	Mar 22 (Fri)	9:30 to 15:30		
Cervical cancer screening (Gynecological, visual and cytological screening)	Feb 4 (Mon)	14:00 to 15:30	Health Center	Fee: 750 yen Registered Komaki residents over 20 years old ①Persons over 20 born in even years* ②Persons born in odd years* that did not receive an examination in 2011 ●Application: Health Center (Persons that have received a free coupon may apply directly to a medical facility.) Persons that have received a free coupon may apply.
Cervical cancer facility screening (Gynecological, visual and cytological screening)	Consultation period: until March 31 (Sun), 2013		Local Ob/Gyn clinic	Cervical cancer examination 1,250 yen, Cervix/body cancer examination 2,350 yen (Body cancer examination is only for people determined to require the examination by the physician)
Osteoporosis screening	Feb 28 (Thu)	13:30 to 15:30	Tobu Community Center	Registered Komaki residents over 30 years old ●Capacity: 75 people ●Fees: 830 yen ●Application: Health Center
Chest X-ray	Mar 18 (Mon)	9:30 to 11:00	Senior Citizens Welfare Center No.1	Registered Komaki residents over 65 years old ●Capacity: 100 people ●Fee: free ●Application: not necessary (Come directly to the Senior Citizens Welfare Center No.1)

Edited and Published

Komaki City Hall Department of Civil Industry Life Division

3-1 Horinouchi, Komaki-shi, Aichi-ken 485-8650 TEL: 0568-76-1173 FAX: 0568-72-2340

<http://www.city.komaki.aichi.jp/contents/90000011.html>

※Please see the relevant service counter for more details regarding any of the items contained herein.



PRINTED WITH SOYINK

Printed with soy ink for the sake of the environment.

Printed on recycled paper for the sake of the environment.