

Life Information News

KOMAKI

10 October
2009 issue



Foreign residents in Komaki / 8,890 residents

Population of Komaki / 153,673 residents

As of September 1, 2009



Komaki Citizens' Festival (See P.2 and 3 for details)



Contents

- Komaki Citizens' Festival
- Information from KIA
- Hiring temporary worker (foreign consultant)
- Special Emergency Housing Allowance Measures begin
- Special Child-Rearing Allowances
- Deadline information
- Medical checkup information
- New Type Flu

The 30th Komaki Citizens' Festival

Komaki Citizens' Festival
Character Kiccho-chan



Oct 17 (Sat) and 18 (Sun) 10:00–16:00
(Opening ceremony starts at 9:30, Oct 17 (Sat))

Shimin Kaikan Venue

Outdoor events

- Yakumo-cho potato tasting booth
- Yakumo-cho salmon cooking booth
- Yakumo-cho Milk tasting booth
- Bounce ball scooping
- Balloon scooping
- Balloon art booth
- Fish therapy by doctor fishes



● Festival stage Dance and other activities
Oct 17 (Sat) 9:30–16:00 Oct 18 (Sun) 10:00–16:00

* "Pretty Cure" Character Show
Oct 17 (Sat) 11:00–11:30, 15:20–15:50

Civic Hall (Kominkan)

- KIA World Restaurant *Open on Oct 17 (Sat)

Civic Center (Shimin Kaikan) Venue (Hall)

- Stage events 10:00–16:00
- Special event Oct 18 (Sun) 10:00–12:00

Chubu Kominkan Venue

- Free planetarium opens
- Astrology readings ● Kids' theater



Ekimae Venue

- Product exhibition & sale
- Gero Hot Springs hand bath
- Stage events



Dance Mix 2009 in Komaki 10:30–16:00
Oct 17 (Sat) Contest Oct 18 (Sun) Open mic

Komakiyama Venue

The theme for this year's venue is the feudal period. It features many attractions for kids.

- Ninja residence ● Quiz rally
- Tea shop



● Stage events
Oct 17 (Sat) 9:30–16:00 Oct 18 (Sun) 10:00–16:00

* "Samurai Sentai Shinkenja" Character Show
Oct 18 (Sun) 10:00–10:30, 15:00–15:30

Parade

Oct 18 (Sun) 12:30–
Route Inuyama Koen



From: Komakihara Elementary School To: Komaki Elementary School
Three Samurai Heroes Parade, elementary / junior high marching band, etc.

A free shuttle bus will take visitors to the various events during the Komaki Citizens' Festival.



Inquiry

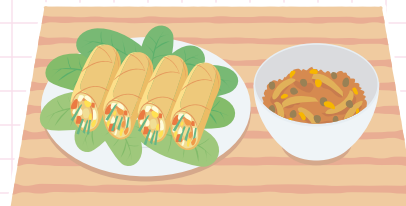
Komaki Citizens' Festival Executive Committee Secretariat (Located within the Komaki City Hall Life Exchange Section) TEL: 0568-76-1173

Information from KIA

Komaki Citizens' Festival World Restaurant

A yearly tradition: homemade cooking from three or four countries prepared by volunteers. 300 meals served.

- **Date** Oct 17 (Sat) 11:00– *While supplies last
- **Venue** Komaki Civic Hall 3F Study Room 3-2
- **Group size** 300 persons (First come, first served)
- **Fee** Free of charge (small donations encouraged)
- **Reservation** Not required

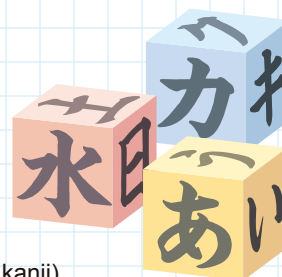


*Oct 18 (Sun) Participate in a citizens' parade to mark the 110th anniversary of the Peru immigration. Now seeking participants (priority given to KIA members).

J-LET On-the-job Japanese Classes

Learn the Japanese language and manners you need for job hunting and in the workplace

- **Schedule** J-LET1 (Level: A&B) (15 sessions between Sep 12, 2009–Feb 6, 2010)
Saturday classes: 16:20-18:50 (150min)
J-LET2(Level: C&D) (15 sessions between Sep 9, 2009–Dec 23, 2009)
Wednesday classes: 18:30–21:00 (150 min)
- **Venue** Komaki Civic Hall 4F Rose Room
- **For** Foreign residents seeking employment
- **Group size** 16 persons per class
- **Fee** KIA members: 2,000 yen/course
Non-members: 5,000 yen/1 course
- **To apply** Contact the Komaki International Association (KIA)
Administration Office directly
- **Course content** ①Boost your practical Japanese skills
(Grammar, listening, conversation, hiragana, katakana, kanji)
②Understand Japanese business society
(CVs, business calls, finding employment through HelloWork and other agencies, job interviews)



KIA Public Manners Course



Learn bicycle-riding rules from the Police Department, learn fire drills and experience an earthquake in the earthquake car with the Fire Department at Komaki Civic Center car park. Followed by a barbecue social event and a fun chance to learn about garbage sorting using discarded materials from the barbecue.

- **Schedule** Nov 8 (Sun) 9:00–16:00 (Meet at 8:30 at Komaki Civic Center car park)
- **Venue** Komaki Civic Center car park and Shikinomori Park
- **For** Foreigners living or working in Komaki City
- **Group size** 50 persons (First come, first served; priority given to KIA members)
- **Fee** Free of charge
- **To apply** Oct 3 (Sat), 2009–Oct 31 (Sat), 2009

Contact the Komaki International Association (KIA) Administration Office directly via phone or E-mail.



Inquiries Komaki International Association (KIA) Administration Office (Komaki Civic Center 4F)
Available between 09:00–17:00 (Tue through Sat, except 12:00–13:00)
TEL: 0568-76-0905 FAX: 0568-71-8396 E-mail: kia@ma.ccnw.ne.jp

Now hiring temporary worker (foreign consultant)

1 | Job information

- **Job description** Provide foreign-language consultation, translation, and interpretation services in Portuguese and Spanish
- **No. of positions open** One
- **Qualifications** Open to all ages, genders, and nationalities. Must be a displaced worker proficient in Portuguese, Spanish, and Japanese and be able to use Microsoft Word and Excel. Must have an understanding of social security.
- **Work schedule** Temporary position starts Nov 2 (Mon), 2009
5 days/week at 1,600 yen/hour
- **Working hours** 9:00–16:30 (Lunch break: 12:00–13:00)

2 | Application deadline

17:00, Oct 13 (Tue), 2009

3 | Application method

Submit CV by mail or in person by the deadline indicated

4 | Other information

After submitting their paperwork, applicants will be interviewed and subjected to a written test before being hired.
Scheduled interview date Oct 19 (Mon), 2009 9:00–



Application/Inquiries

Care Contact, Person in charge of Welfare Benefit,
Welfare Section TEL 76-1126

Special Emergency Housing Allowance Measures begin

Komaki City is working with HelloWork to provide support to ensure housing and employment opportunities for displaced workers who have lost or are in danger of losing their home. Housing allowances will be available starting in October.

- **For** All of the following must apply:
 - ① Primary household earners who have been unemployed for less than two years
 - ② Those with the ability and desire to work
 - ③ Those who have lost or are in danger of losing their home
 - ④ Generally those without income and savings falling below a certain amount
(Please contact us for detailed requirements)
- **Fee** Monthly payments in the amount of your housing rental payment
(Maximum 36,000 yen for single-person households and 46,600 yen for multiple-person households)
Move-in costs will be handled through the Total Support Loan Project of the social welfare council.
- **Payment method** Direct deposit to the housing manager
- **Payment period** Payments begin the month following application and continue until March 2010

Inquiries

Care Contact, Person in charge of Welfare Benefit,
Welfare Section TEL 76-1126



Information on FY09 Special Child-Rearing Allowances

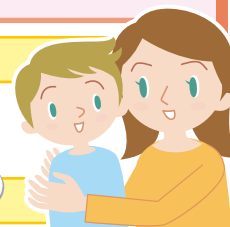
As of **October 1, 2009**, FY09 Special Child-Rearing Allowances in the amount of **36,000 yen per eligible child** are available to **heads of households** in Komaki City with **children born between April 2, 2003 and April 1, 2006**. Applicants must present their Alien Registration card (must indicate a period of stay and must not indicate short-term status).

Detailed information on applications and eligible households will be released in mid-December. We appreciate your patience.



Does your Alien Registration card show your current address?

Provisions are generally offered on the basis of your Alien Registration card. Information will be forwarded to the address listed on your application form, so please submit any changes of address as soon as possible.



Is your process to renew your period of stay entered on your Alien Registration card?

As of October 1, 2009, those without a period of stay or with short-term status will not be eligible for allowance payments. Even if requirements are met, application forms cannot be sent unless your Alien Registration Card indicates your period of stay. Please take care of this by going to the Citizens' Office immediately (we will confirm that you are head of household and that you have eligible children).



What about payments for victims of domestic violence?

If it is absolutely impossible for domestic violence victims to move from their current residence, advance applications will be accepted at the Komaki City hall Child Welfare Division between October 1 and October 30.

Inquiries Child Welfare Division TEL: 76-1129

Next tax payment deadline: Nov 2, 2009 (Mon)

- Municipal and prefectural taxes (3rd term)
- National Health Insurance Tax (6th term)
- Nursing Care insurance Fees (6th term)
- Late-Term Medical Insurance for the Elderly (3rd term)

Submit your payments promptly! Smooth functioning of the system requires that everyone make timely payments. Avoid missed payments by setting up direct debit payments from your bank account. If you have already set up direct debit payments for your taxes, be sure that your account has sufficient funds available by the day before payment is due.

★ If your payment is late...

If your payment is late, city hall will send another payment slip (reminder notice) to alert you.

Please make your payment as soon as you realize it is late. You may have a sound reason for your delayed payment, but the City Hall Income Tax Office will not know this if you do not consult with or contact us. Please notify us of any special circumstances.

If you do not pay and show no intention of doing so by failing to consult with us, we will consider your account delinquent and initiate the collection process (including seizure of funds).

◎ The City Hall Income Tax Office will be open on the following Sundays to answer tax-related questions and accept payments.

- Dates Oct 11 (Sun) — 8:30–17:15
- Oct 25 (Sun) — 8:30–17:15

◎ Tax payments will be accepted at the Komaki Station branch office weekdays, weekends, and holidays. Please stop by at your convenience.

○ Business hours from 8:30–17:15. ○ The Komaki Station branch office is closed during the New Year holidays.

Inquiries Tax Office TEL: 72-2101 (operator) Ext: 276~279 TEL: 76-1117•76-1118 (direct dial)

Medical Checkup Information

For details inquire with the Health Center TEL: 75-6471

Mother/child Health Examination Calendar

*Note: Make sure to bring your Maternal and Child Health Handbook.



Checkups available	Schedule	Time	Checkups for
Health examinations and BCG vaccinations for 4-month-old infants, dental examinations for mothers	Oct 16 (Tue)	Admissions 13:05-13:55	Children born in May 2009
	Oct 13 (Tue), 20 (Tue), 27 (Tue)		Children born in Jun 2009
Health examinations for 18-month-old infants	Oct 2 (Fri), 9 (Fri), 16 (Fri)	Admissions 13:05-14:15	Children born in Apr 2008
Dental examinations for children aged 2 years, 3 months	Oct 1 (Thu), 22 (Thu)	Admissions 9:00-10:10	Children born in Jul 2007
Health examinations for 3-year-old children	Oct 7 (Wed), 14 (Wed), and 28 (Wed)	Admissions 13:05-14:15	Children born in Oct 2006

*Note: Health examination admission times differ depending on date of birth. Please refer to the health examination schedule that will be sent in the mail.

Group Cancer Screening

Examinations	For	Oct 2009
Screening test for stomach cancer Abdominal X-ray 930 yen	Registered Komaki residents aged 40 years and over	8 th (Thu)
Screening test for colorectal cancer Testing of the stool for occult blood 520 yen	Registered Komaki residents aged 40 years and over	Screening tests for stomach cancer will also be conducted.
Screening test for breast cancer Mammography screening 1,200 yen	Registered Komaki residents over 40 years born in an even year and those that did or will turn 40 years in 2009. (Examinations will also be given to those born in odd years who did not receive an examination in 2008.)	19 th (Mon) ◎27 th (Tue)

*Screening tests for stomach cancer, colorectal cancer, and osteoporosis will each be held once in a period of May through March of the following year.
 *Note: Screening tests for uterine cancer and breast cancer (chest X-rays) can now be done once every two years. (According to the Health, Labour and Welfare Ministry's Vital Cancer Prevention Education and Cancer Screening Test Guidelines.)
 *Note: Venue for group screening tests for cancer and osteoporosis: Test dates without a mark will be conducted at the Health Center. Those marked "◎" will be conducted at the Tobu Civic Center.

To apply for group cancer screening *Information on available screening tests will be provided in each monthly newsletter. Apply at the Health Center (Monday through Friday, 8:30-17:15)

Fee exemption system The following persons may undergo cancer screening tests (excludes osteoporosis screening) free of charge. Please submit designated document at the time of screening. ◎ Persons aged 70 or older, ◎ Persons 65 and older who are bedridden, ◎ Persons in the household on Social Assistance, ◎ Persons in households exempt from municipal tax

Immunization

Type	Schedule	Time	Vaccine candidates, application, and other information	Venues
Polio	Oct 8 (Thu)	Admissions 14:00-15:00	For: Children born between Oct 17, 2001 and Jan 16, 2009 who have not yet received the vaccine two doses. (BCG vaccination priority will be given to those who have received information on four-month health examinations.) Please bring: Maternal and Child Health Handbook and OPV questionnaire *The vaccine will not be administered to children with diarrhea or oral inflammation on the day of their visit. *Those currently undergoing medical treatment or just completing medical treatment should first consult with their primary physician (includes those taking any medicine)	Ajioka Civic Center
	Oct 23 (Fri)			Tobu Civic Center
	Oct 21 (Wed)			Kitazato Civic Center
	Oct 29 (Thu)			Civic Hall (Kominkan)

Please visit the appropriate Civic Center.

Changes in How to Consult of the New Type Flu

How to Consult from now on
 ① In case of having symptoms of suspect of the new type flu from now on, like fever of 38° or higher, cough, sore throat, etc. **should contact directly the medical institutions before going.**
 ② At the time of the consult **should wear a mask** and follow the instructions.

Consultation from now on
 ○Kasugai Hokenjo Consult of new type flu (Monday to Friday) ---Office Hours : 9:00-17:00 TEL: 0568-31-2188
 ○Komaki Hoken Center (Monday to Friday)Office Hours : 8:30-17:15 TEL: 0568-75-6471

- To prevent infection, please follow the instructions as described below
- ◎Get accurate information on TV news, newspapers, etc.
 - ◎Cover your mouth and nose with a handkerchief or tissue when coughing or sneezing.
 - ◎Wash your hands and gargle after going back home.



Edited and Published

Komaki City Hall Department of Civil Industry Life Division
 1-1 Horinouchi, Komaki-shi, Aichi-ken 485-8650 TEL: 0568-76-1119 FAX: 0568-72-2340
<http://www.city.komaki.aichi.jp/contents/90000011.html>

*Please see the relevant service counter for more details regarding any of the items contained herein.