

Life Information News KOMAKI

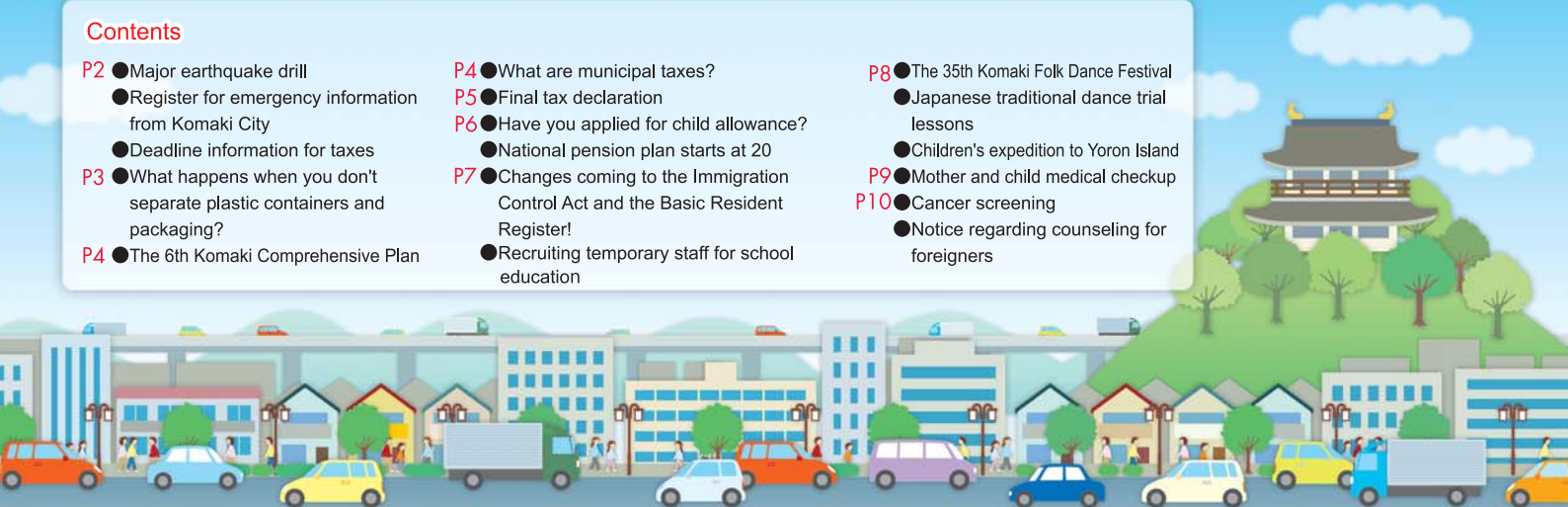
2
2012



KIA International Friendship Festival (previous year)

Contents

- | | | |
|--|---|---|
| P2 ●Major earthquake drill
●Register for emergency information from Komaki City
●Deadline information for taxes | P4 ●What are municipal taxes?
P5 ●Final tax declaration
P6 ●Have you applied for child allowance?
●National pension plan starts at 20 | P8 ●The 35th Komaki Folk Dance Festival
●Japanese traditional dance trial lessons
●Children's expedition to Yoron Island |
| P3 ●What happens when you don't separate plastic containers and packaging? | P7 ●Changes coming to the Immigration Control Act and the Basic Resident Register!
●Recruiting temporary staff for school education | P9 ●Mother and child medical checkup
P10 ●Cancer screening
●Notice regarding counseling for foreigners |
| P4 ●The 6th Komaki Comprehensive Plan | | |



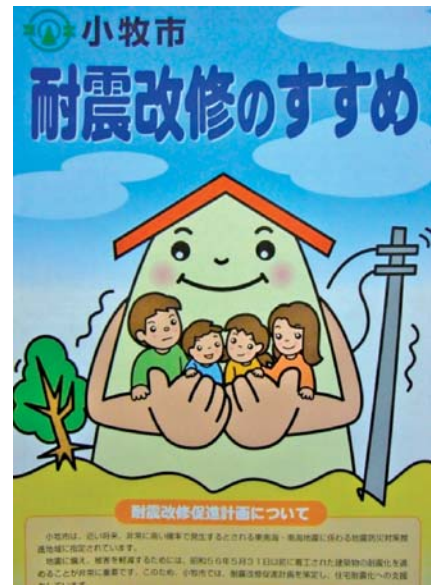
Disaster
Prevention
Topics

9

Major
earthquake drill

6,434 people died in the Great Hanshin Earthquake on January 17, 1995; more than 80% died as a result of their homes collapsing or furniture falling on them. Wooden home structures built before the old 1981 Building Standards Act in particular, suffered a great amount of damage. People living in older wooden-framed homes, should determine the ability of their home to withstand temblors and prepare for a large earthquake by providing necessary earthquake reinforcement.

Wooden residences built before May 31, 1981 in Komaki can receive free earthquake evaluation. Funding is also available to help reinforce wooden homes determined to be dangerous or likely to pose a danger of collapsing after undergoing this evaluation. Please submit an application for for free earthquake evaluation to have the city dispatch specialists to evaluate your home.



QR Code

Sign up for notifications! Komaki Disaster Information Mail

Receive emails with emergency information from the Japan Meteorological Agency and Komaki City. Please register with your cellphone or PC by sending a blank email to the email address shown here or with the QR code.

Blank mail address: **t-komaki@sg-m.jp**



Municipal Website: Disaster Prevention Information: <http://www.city.komaki.aichi.jp/contents/ctg20.html>

Inquiries

Earthquake evaluation/reinforcement: Construction Division TEL.0568-76-1142
General projects/disaster prevention information: Disaster Prevention Division
TEL.0568-76-0247

Next tax payment deadline: Feb 29 (Wed)

- Fixed Asset Tax (4th term)
- National Health Insurance Tax (9th term)
- Nursing Care Insurance Fees (8th term)
- Late-Term Medical Insurance for the Elderly (7th term)

Submit your payments promptly! Smooth functioning of the system requires that everyone make timely payments. Avoid missed payments by setting up direct debiting payments from your bank account. If you have already set up direct debiting payments for your taxes, be sure that your account has sufficient funds available by the day before payment is due.

If your payment is late ...

If your payment is late the City Hall will send you an invoice (reminder) again to notify you of overdue payment. City employees also make house calls and contact by phone and other means. Please pay early when you remember. You may have a sound reason for your delayed payment, but the City Hall Tax Office will not know this if you do not consult with or contact us. Please notify us of any special circumstances.

If you are too busy during the day on weekdays to make your payment...

1. The City Hall Income Tax Office will be open on the following Sundays to answer tax-related questions and accept payments.
◎ **Date/time: Feb 12 (Sun) and Feb 26 (Sun) 8:30 to 17:15**
2. Tax payments will be accepted at the Komaki Station branch office every day. Please stop by at your convenience.
◎ **Reception hours: 8:30 to 17:15** ◎ The Komaki Station branch office is closed during the New Year holidays.
3. If your payment slip has a barcode, you may pay your taxes at a local convenience store.
※ Convenience store payments can only be made prior to the payment due date.

Inquiries


Tax Office


TEL.0568-76-1117 / 0568-76-1118 (Direct)

Separation of garbage and recyclables: Plastic Containers



Separating  (Plastic Containers) is important.

Komaki City's collection of residential waste with separated  items is required by law. Collected items are recycled and reborn as new plastic products.

 items are separated by hand by processing contractors after being collected separately. Garbage that is not separated properly at source results in wasted selection labor and excess costs. When mixed with other kinds of grime and garbage, recycling becomes impossible.

Preventing increased recycling costs for the city and the effective use of precious resources requires the cooperation of citizens like you.

Plastic Containers

All items marked with



Look for this mark!

Example plastic containers



Bottles

- Bottles for sauces, cooking oils, dipping sauces, fermented milk drinks, etc.
- Containers for soaps, shampoos, hand creams, etc.
- Containers for medicines, cosmetics, etc.



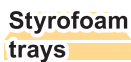
Plastic bags and wrappers

- Shopping bags and other plastic bags
- Bags and liners for snacks, breads, instant foods, etc.
- Wrappers (used to coat merchandise)



Styrofoam cups

- Containers for cup noodles, puddings, yoghurts, etc.
- Packing for eggs, tofu, etc.



Styrofoam trays

- Trays for fresh foods, sashimi, etc.
- Containers for bento lunches, etc.
- Trays for fruits and ready-made side dishes



Other

- Plastic product caps and lids (PET bottles, bottles, puddings)
- Styrene foam



Disposal procedure for plastic containers

Remove all content, rinse with water, place in a recyclable garbage bag (green), and place at the recyclable garbage collection site.



Inquiries Waste Management Section TEL.0568-76-1187

The 6th Komaki Comprehensive Plan

Part 2



The 6th Komaki Comprehensive Plan is a plan for urban development with cooperation between citizens and the municipal government. Many citizens were involved in the process of planning. We'd like to take this opportunity to introduce some of the citizens that participated in that planning process.

●The Komaki Comprehensive Plan Committee

Goal Investigate and deliberate the Comprehensive Plan.

I had lived until now without any connection to municipal governance, but am happy to have been involved in Komaki's urban development.



●Child Urban Development Research Group

Goal Thinking about the future of Komaki's urban development from the perspective of junior high students that are the future of our city.

Each person has their own opinion, so we saw a lot of different ideas brought forward. I think we brought some good suggestions related to how the ideas of second grade junior high students affect Komaki.



●Citizen Urban Development Research Group

Goal The opinions and ideas of the people of Komaki are reflected in the 6th Komaki Comprehensive Plan.

Measures covering everything from public transportation to foreign nationals are addressed specifically to the various issues facing each area. Response is required for these issues in each region.



We made five urban development goals that summarize areas of high public interest. By working towards these five goals, we seek to create a future Komaki that is a creative place for people and nature to thrive.

Inquiries Municipal Governance Strategy Section TEL.0568-76-1105

What are municipal taxes ?

Municipal taxes:

These taxes are used in Aichi Prefecture and Komaki City to fund many areas directly affecting your daily life such as waste treatment, sewage and waterworks, and emergency services like fire fighting and police. They are collected and distributed as necessary, kind of like membership fees that must be payed as a resident living in the area.

Differences between municipal taxes and income taxes

Both municipal and income taxes are levied on personal income (wages, etc.), but are collected by different places. Income taxes are collected nationally, and municipal taxes are collected by local administrative bodies (prefectures and municipalities). These taxes are also collected at different times. For employees of companies, income tax is deducted when wages are paid, and municipal taxes are collected over the following year from pay. For example, income for wages during 2010 have taxes levied from June 2011.

Municipal tax calculation

Municipal taxes are broadly divided into the per-capita rate that is the same amount for all people capable of paying taxes and the rate based on the amount of income the person earned.

Per-capita rate

The taxes for the per-capita rate are as follows: Annual Prefectural Tax **1,000 yen** (standard tax rate) and Annual Municipal Tax **3,000 yen** (standard tax rate). Aichi Prefecture has introduced the Aichi Mori To Midori Zukuri Zei green tax of 500 yen, so Prefectural Taxes total **1,500 yen**.

Income rate

Income rated tax is generally calculated using the following method.

(Income amount - Income exemptions) x Tax rate - Tax exemptions = Income rated tax

※Income amount.....Income generated through wages, business, etc.

※Income exemptions...Social insurance paid including National Health Insurance premiums, exemptions for dependents including children or senior parents, etc.

※Tax rate.....4% Prefectural tax rate, 6% Municipal tax rate, Total 10% tax rate

※Tax exemptions.....Dividend exemptions including dividend income from stocks, etc.

Inquiries Citizens Division, Komaki City Hall 1-1 Horinouchi, Komaki City 485-8650 TEL.0568-76-1182

Notice Regarding Final Tax Declaration for 2011 Counseling Venue

Venue **Komaki Civic Hall** (Komaki Civic Hall South)

Address **2-107 Komaki, Komaki City (see map)**

Available period **Feb 14 (Tue) to Apr 2 (Mon)**

Not open on weekends or holidays. Counseling will be made specially available on Feb 19 (Sun) and Feb 26 (Sun).

* Income and gift taxes must be declared and paid by Mar 15 (Thu), consumption taxes and local consumptions taxes must be declared and paid by sole proprietors by Apr 2 (Mon).

* Be aware that for this period, the tax office and city hall will not give direction or counseling related to preparation of declaration forms.

Hours **9:00 to 17:00**

The venue may finish counseling early depending on how busy it is.
Please come before 16:00.

Transportation facilities Come by city bus to Shiminkaikanmae (on either the Komaki or Ajioka Junkan (clockwise or counterclockwise) routes)
About 15 minutes walk from Meitetsu Komaki Station

Documents to bring People without year-end adjusted wage income or people declaring wages from two or more sources

- Wage income direct deduction receipt (originals only) / ● Documentation for social insurance premiums
- Documentation for life insurance and earthquake insurance premiums /
- Copy of Alien Registration Certificate
- Documentation related to living arrangements (available at tax office and counseling venue).
- Copy of savings bank book / ● Birth certificates and marriage certificates (if you have overseas dependents)
- Documentation for remissions (if you have overseas dependents) /
- Personal seal (signatures accepted if you do not have a seal)

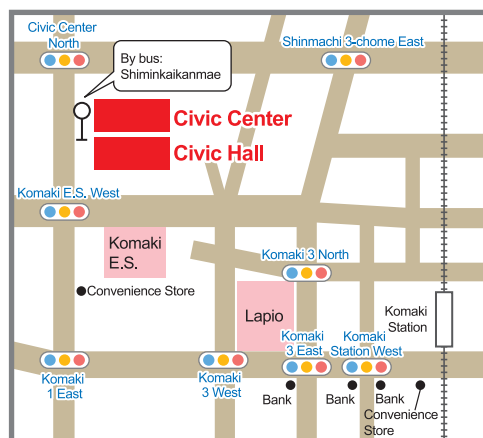
※Other documentation may be required depending on the content of your declaration. If unsure, contact the Komaki Tax Office.



You can prepare your tax declaration without going to the tax office on your home PC.

You can prepare declaration forms for income tax related final tax declaration, blue form declaration calculation sheet, accounting sheet, consumption tax declaration form and gift taxes at the Final Tax Declaration Form Preparation Corner.

For details visit <http://www.nta.go.jp>



Inquiries **Komaki Tax Office 1-424 Chuo, Komaki City 485-8651 TEL.0568-72-2111**

※Guidance is available by phone via automated voice system. Follow the instructions given.
Please take care with the number when you call.



Have you applied for child allowance?



Child allowance changed to the new system on Oct 1, 2011. You must reapply to receive the allowance under the new system.

People receiving child allowance as of Sep 30, 2011 were sent application information and forms by postal mail.

If you have not submitted your application form, please do so before the application period ends.

Due to changes in the child allowance system, some people that were receiving the allowance up to September are no longer able to apply. If you are unsure, please contact the Child Welfare Division.

How to apply

Submit your application form by mail in the attached envelope or bring it to the Child Welfare Division directly.

Persons living separately from or with different registered addresses from their children, or persons with children studying overseas must apply in person and not by postal mail.

Application deadline

Postal mail: Postmarked Mar 31, 2012 (Sat)

In person: Mar 30, 2012 (Fri)

※Be aware that persons whose application was received late will receive allowance for the portion for the month following their application. (They will not receive the amount for the period starting October.)

○However, the following people must submit their application in advance (they will be unable to receive previous amounts even if they apply by March.)

People moving from Komaki to another municipality after October 1

- Application to Komaki (the portion from October until moving) — This portion can be received from October if applied for before March.
- Application to the other municipality (the portion after moving) — Apply within 15 days of the day after moving from Komaki (the scheduled moving day)

People moving from another municipality to Komaki after October 1

- Application to the other municipality (the portion from October until moving) — This portion can be received from October if applied for before March.
- Application to Komaki (the portion after moving) — Apply within 15 days of the day after moving from the other municipality (the scheduled moving day)

Children born after October 1

Apply within 15 days of the day after the child was born (late applications will result in receiving the portion for the month following the month you applied in)

Since the start of the new system, people with children able to apply from October must perform that application separately.

Inquiries Child Welfare Division TEL.0568-76-1129



Benefits of the National Pension

(All persons are included from 20 years old)



3 Benefits of the National Pension (Basic Pension)

- 1 Support from when you become elderly. Basic pension for the elderly
- 2 Support when you become sick or injured. Basic disability pension
- 3 Support for children and spouse with children if you die. Basic survivor pension

National Pension is a system to provide a common basic pension to all citizens to ensure livelihood after becoming elderly or in case of some unfortunate occurrence. In order to provide this service all persons living in Japan between ages 20 and 60 are required to pay national pension premiums (basic pension) regardless of occupation.

Approximately one month before the 20th birthday, an application form will be sent by the Nagoya North Branch Office; ensure completion of the application procedure. If payment of premiums is difficult, persons under 30 years of age can use the young person payment deferment system and students can use the student payment special deferment system. Please contact us for more details.

Inquiries Japan Pension Service Nagoya North Branch Office TEL052-912-1214 / Health Insurance & Pension Division TEL.0568-76-1124

Changes coming to the Immigration Control Act and Basic Resident Register Law from July 9, 2012

As the number of foreigners immigrating and residing in Japan increases, the municipalities face the need for a basic system to provide the same basic governmental services to foreign nationals that are provided to Japanese citizens. To address this need foreign residents will be covered by the same basic resident registry as Japanese to rationalize government services and promote increased convenience for foreign residents. This change was publicized on July 15, 2009 with the Law to Revise Part of the Residential Basic Book Act and will be implemented together with the Law to Revise the Immigration Act, etc., on July 9, 2012.

What will change?

A

- ①The foreign registration system will be eliminated.
- ②Certificates of Residence (Juminhyo) will be created for foreign residents.
- ③When moving Moving-in and Moving-out Notifications (Tennyu-/Tenshutsu-todoke) will be required. (Application to City Hall)
- ④Residence Cards (Zairyu Card) or Special Permanent Residence Certificates (Tokubetsu Eijusha Shomeisho) will be issued in place of Certificates of Alien Registration (Gaikokujin Toroku Shomeisho) (Immigration Bureaus will issue Residence Cards (Zairyu Card) and City Halls will issue Special Permanent Residence Certificates (Tokubetsu Eijusha Shomeisho))
- ⑤Applications for changes to status of residence or updating period of residence can only be performed at an Immigration Bureau. (You will no longer need to submit documents at City Hall)



Who can have a Certificate of Residence issued?

A

People that have a permanent residence and that stay legally more than 3 months, excluding tourists and other persons in transit. Specifically, medium- to long-term residents (persons issued a Residence Card), special permanent residents (Tokubetsu Eijusha), temporary refugees or temporary transients, and transitional transients due to birth or denationalization.

Is there a required procedure for current foreign residents of Japan to receive a Certificate of Residence?

A

In principle there is no required procedure, a Certificate of Residence will be prepared based on your Alien Registration information so ensure that Alien Registration procedures have been completed properly. If the period of residence or status of residence for the foreign registration have elapsed, a Certificate of Residence will not be made. Please come to complete the required procedures at the Citizens Division at Komaki City Hall.

※In May 2012, a provisional Certificate of Residence will be sent to you by mail if you are eligible for preparation thereof. If you receive it, make sure you check for errors and then apply at City Hall if any are found.

※Certificates of Residence will not be issued for persons in transit (up to 3 months in Japan).

※Please see the websites below for more details regarding the legal revision.

•Immigration Bureau, Ministry of Justice

<http://www.immi-moj.go.jp/index2.html>

•Changes to the Basic Resident Registration Law (Ministry of Internal Affairs and Communications)

http://www.soumu.go.jp/main_sosiki/jichi_gyousei/c-gyousei/zairyu.html

Inquiries Citizens Division TEL.0568-76-1121

Recruiting temporary staff for school education in the 2012 academic year.

Job information	Elementary and junior high schools in Komaki City School Support Staff	Language consultant for foreign students (Tagalog)
Capacity	To be determined	To be determined
Description of duties	<ul style="list-style-type: none"> • Assist elementary school lessons • At junior high school support students likely to drop out, help with club activities 	Support the studies and give guidance counseling for foreign students with Japanese language difficulties, translation of report cards and contact with guardians, etc.
Conditions	No special conditions (teaching license not required)	Persons proficient in Tagalog and Japanese (teaching license not required)
Working hours	Mon to Fri 8:30 to 16:30 (7 work hours 60 minutes of rest)	3 days (weekdays) 9:30 to 16:30 (6 work hours)
Wages	Hourly wage: 1,200 yen/hour	Hourly wage: 2,500 yen/hour
Remarks	Determined by interview	Determined by interview and written examination (dictionaries allowed)
Hiring date	Apr 1, 2012	
Interview date	Feb 27 (Mon) (Feb 24 (Fri) is also scheduled if there are many applicants)	

Application Submit a resume with employment history by **Feb 15 (Wed) (must arrive by this date)** to School Education Division (Postal Code 485-8650 no address req'd TEL.0568-76-1165)

Inquiries School Education Division TEL.0568-76-1165

The 35th

Komaki Minyou Festival - Komaki Minyou Association

Come see the dancers performing folk dances from all over Japan wearing their traditional garb. See expressions of all the emotion of human life of days gone by portrayed in dance.

Date/time Feb 12, 2012 (Sun)

Doors open: 9:30 Event begins: 10:00

Venue Great Hall, Komaki Civic Center

Capacity 1,300



Application/Inquiries Komaki City Folk Dance Association TEL.0568-72-0557 / Cultural Promotion Section TEL0568-76-1188

Japanese traditional dance trial lessons

Try on a Kimono and dance traditional Japanese folk dance!

Date/time Feb 18, 2012 (Sat)

17:45 to 19:00 or 19:15 to 20:30

Venue Rehearsal Room 2, Komaki Civic Center

Fee Free of charge

What to bring Yukata, obi, tabi (or socks if you do not have tabi), and 2 koshihimo If you do not have a yukata, some are available to borrow on the day When applying, make sure you write your height.

Application Write your name, contact information, nationality, and age and apply by fax or email by Feb 10.

Only foreign women may apply for this trial lesson. We will wear yukata and practice the Sakura Sakura dance.



Application/Inquiries Komaki Japanese Folk Dance Association - Wayouka Hanayagi
Fax0568-71-8805 E-mail: wakayasha@yahoo.co.jp

36th Children's expedition to Yoron Island Call for participation

Come with us to the natural environs of Yoron Island, to the south near Okinawa, where you can take part in outdoors activities and share time with friends from all over Japan, building rafts, exploring caves and more! Deepen friendship that goes beyond language and lifestyle by sharing adventure and activities with foreign elementary students living in Japan, taking a first step to international understanding.

Date/time Mar 27, 2012 (Tue) to Apr 2 (Mon)
seven days and six nights

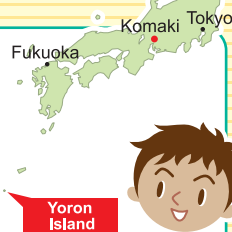
Venue Yoron Town, Oshima District,
Kagoshima Prefecture

Open to Grade 2 to 6 elementary students
※Including foreign elementary students

Capacity 200 Japanese elementary students and 100 foreign elementary students residing in Japan

Fee 135,000 yen (※participants from Aichi)

Application Apply by Mar 7 (Wed) to the International Youth Association of Japan K.S.K.K.



Application/Inquiries

International Youth Association of Japan K.S.K.K. 5-7-8-921 Mita, Minato City, Tokyo
TEL.03-6459-4661 Fax03-6459-4633 E-mail info@kskk.or.jp

Medical checkup information



Mother/child Health Examination Calendar

※Make sure to bring your Maternal and Child Health Handbook.



Examination	Schedule	Venue	Time	Eligibility/Description/Application/etc.
Health examinations and BCG vaccinations for 4-month-old infants, dental examinations for mothers	Feb 7 (Tue)	Health Center	Reception 13:05 to 13:55	Born between Oct 1 and 7, Heisei 23
	Feb 14 (Tue)			Born between Oct 8 and 16, Heisei 23
	Feb 21 (Tue)			Born between Oct 17 and 24, Heisei 23
	Feb 28 (Tue)			Born between Oct 25 and 31, Heisei 23
Health examinations for 18-month-old infants	Feb 3 (Fri)	Health Center	Reception 13:05 to 14:15	Born between Aug 1 and 11, Heisei 22
	Feb 10 (Fri)			Born between Aug 12 and 20, Heisei 22
	Feb 17 (Fri)			Born between Aug 21 and 31, Heisei 22
Dental examinations for children aged 2 years, 3 months	Feb 2 (Thu)	Health Center	Reception 9:00 to 10:10	Born between Nov 1 and 15, Heisei 21
	Feb 23 (Thu)			Born between Nov 16 and 30, Heisei 21
Health examinations for 3-year-old children	Feb 1 (Wed)	Health Center	Reception 13:05 to 14:15	Born between Feb 1 and 9, Heisei 21
	Feb 8 (Wed)			Born between Feb 10 and 20, Heisei 21
	Feb 22 (Wed)			Born between Feb 21 and 28, Heisei 21
Niko niko cavity prevention class Reservations required	Feb 22 (Wed)	Health Center	10:00 to 11:00	20 Children that have begun to grow teeth and their parents ● Fee: Free ● Application: Health Center
Baby food class (Initial Gokkun (swallowing) class) Reservations required	Feb 1 (Wed)	Health Center	10:00 to 11:00	27 sets of parents 4 months after giving birth ● Fee: Free ● Application: Health Center
Baby food class (Later kami-kami (biting) class) Reservations required	Feb 24 (Fri)	Health Center	10:00 to 11:00	21 sets of parents 9 months after giving birth ● Fee: Free ● Application: Health Center
Weekday class for new moms and dads (mealtime class) Reservations required	Mar 8 (Thu)	Health Center	10:20 to 15:00	20 Komaki resident women 5 to 7 months pregnant and their husbands (woman can also participate alone) ● Description: Talking about food for pregnancy and cooking lesson, Talking about oral care and dental checkup. ● What to bring: Parent and child (maternal and child) health handbook, apron, half a cup of uncooked rice, writing utensil, toothbrush, cup, hand mirror, free dental examination ticket for adults (pregnant women) ● Application: apply to the Health Center at least one week before the day
Sunday class for new moms and dads Reservations required	Mar 4 (Sun)	Health Center	10:00 to 12:00 Reception: 9:30 to 9:50	30 sets of women 6 months pregnant or later and their husbands ● Description: Talk about breastfeeding, giving birth and childcare, the role of the father, and experiencing pregnancy, practice holding baby dolls. ● What to bring: Parent-child (maternal and child) health handbook, writing utensils ● Application: Apply from Jan 16 (Mon) (apply to the Health Center at least one week before the day)
Nursing counseling Reservations required	Feb 6 (Mon) Feb 13 (Mon) Feb 29 (Wed)	Health Center	13:00 to 16:00	● Fee: Free ● Application: Health Center
Parenting, pregnancy, and giving birth health counseling	Feb 7 (Tue)	Shinooka Jidokan	10:00 to 11:15	● Content: Consultation regarding worries/concerns for raising children, body measurements, blood pressure measurement, urine inspection (optional) ● Fee: Free
	Feb 10 (Fri)	Seibu Jidokan		
	Feb 17 (Fri)	Komaki Minami Jidokan		
	Feb 21 (Tue)	Ajioka Jidokan		
Baby visit	About 2 or 3 months after birth, a health contact and veteran health contact will come visit your home with a few gifts to congratulate you on the birth of your baby. (You will be contacted in advance to set a convenient time.)			

※Health examination admission times differ depending on date of birth. Please refer to the health examination schedule that will be sent in the mail.

Inquiries Health Center TEL.0568-75-6471

Medical checkup information



Screening tests for cancer and osteoporosis

Inquiries

Health Center (Hoken Center)

TEL.0568-75-6471

	Type	Schedule	Time	Venue	Eligibility/description	Application:
Group screening	Screening test for stomach cancer (Abdominal X-ray)	Mar 15 (Thu)	9:00 to 11:00	Health Center	Registered Komaki residents over 40 years old ●Capacity: 40 ●Fee: 930 yen	Health Center
	Screening test for colorectal cancer (Testing of the stool for occult blood)	※A feces sample container will be collected on the day stomach cancer screening is implemented.		Health Center	Registered Komaki residents over 40 years old ●Fee: 520 yen	Health Center
	Screening test for breast cancer (Mammography screening)	Feb 15 (Wed) Mar 5 (Mon)	9:00 to 15:30	Health Center	Registered Komaki residents over 40 years old (①Persons over 40 born in odd years ②Persons born in even years that did not receive an examination in Heisei 22 ③Persons turning 40 years old that were born in Showa 46 ●Capacity: 85 people ●Fee: 1,200 yen)	Health Center
		Mar 23 (Fri)	9:30 to 15:30	Tobu Community Center		
		*Persons that have received a free coupon may apply. Mar 23 (Fri) is the last examination of this fiscal year				
	Cervical cancer screening (Cytological screening)	Feb 24 (Fri) Mar 22 (Thu)	14:00 to 15:30	Health Center	Registered Komaki residents over 20 years old (①Persons over 20 born in odd years ②Persons born in even years that did not receive an examination in Heisei 22 ●Capacity: 100 people ●Fee: 750 yen)	Health Center
		*Persons that have received a free coupon may apply. Mar 22 (Thu) is the last examination of this fiscal year				
Osteoporosis screening	Feb 9 (Thu)	13:30 to 15:30	Health Center	Registered Komaki residents over 30 years old ●Capacity: 75 ●Fee: 830 yen	Health Center	
Lung cancer (sputum test)	Examination period until Feb 24 (Fri) Heisei 24		Health Center	Registered Komaki residents meeting any of the following: (○50 years old or older with smoking index of 600 or higher ○40 years old that has coughed up blood within the last 6 months ●Fee: 470 yen)	Health Center ※Until Feb 17 (Fri)	
Individual examination	Cervical cancer facility screening (Cytological screening)	Examination period until Mar 31 (Sat) Heisei 24		Local Ob/Gyn clinic	Registered Komaki residents over 20 years old (①Persons over 20 born in odd years ②Persons born in even years that did not receive an examination in Heisei 22 ●Fees: cervical cancer examination 1,250 yen, cervix/body cancer examination 2,350 yen (Only for people determined to require the examination by the physician) ●Capacity: 100 people)	Health Center *Persons that have received a free coupon may apply directly to a medical facility.
	Stomach cancer and colorectal cancer screening	Examination period until Feb 14 (Tue) Heisei 24		Local medical institution	Registered Komaki residents over 40 years old ●Fee: 4,800 yen	Local medical institutions
	Prostate cancer screening				Registered Komaki residents over 50 years old ●Fee: 1,500 yen	
	Chest X-ray				Registered Komaki residents over 40 years old ●Fee: 1,310 yen	
	Hepatitis screening				People born between April Showa 46 and March Showa 47 ●Fee: Free	

Regarding breast cancer / cervical cancer screening

※From Heisei 19 we have promoted screening once every two years based on even and odd years (using the Japanese calendar). Thank you for your understanding and cooperation.

※People eligible to receive a free coupon were individually sent one in June. Free coupons expire at the end of March at the end of this fiscal year.

Use your free examination ticket early, before it runs out.

Notice regarding counseling for Foreigners

Life Exchange Section (Seikatsukoryu-ka),
South Government Office Bldg 2F, City Hall

9:00 - 17:00 (excluding 12:00 - 13:00)

Portuguese: Mon-Fri

Spanish & English: Mon/Tues/Thurs

In addition, the Health Insurance and Pension Department and Child Welfare Division have staff available to help in Portuguese (9:00 to 17:00) the Welfare Division in Portuguese (9:30 to 16:30) and the Citizen Division in Chinese (9:00 to 16:30).

Inquiries

Life Exchange Section

TEL.0568-76-1173

Edited
and
Published

Komaki City Hall Department of Civil Industry
Life Division

1-1 Horinouchi, Komaki-shi, Aichi-ken 485-8650

<http://www.city1.html1.komaki.aichi.jp/contents/90000011.html>

※Please see the relevant service counter for more details regarding any of the items contained herein.

TEL: 0568-76-1173 FAX: 0568-72-2340



Printed with soy ink for
the sake of the environment.

Printed on recycled paper for the sake of the environment.