

Life Information News KOMAKI

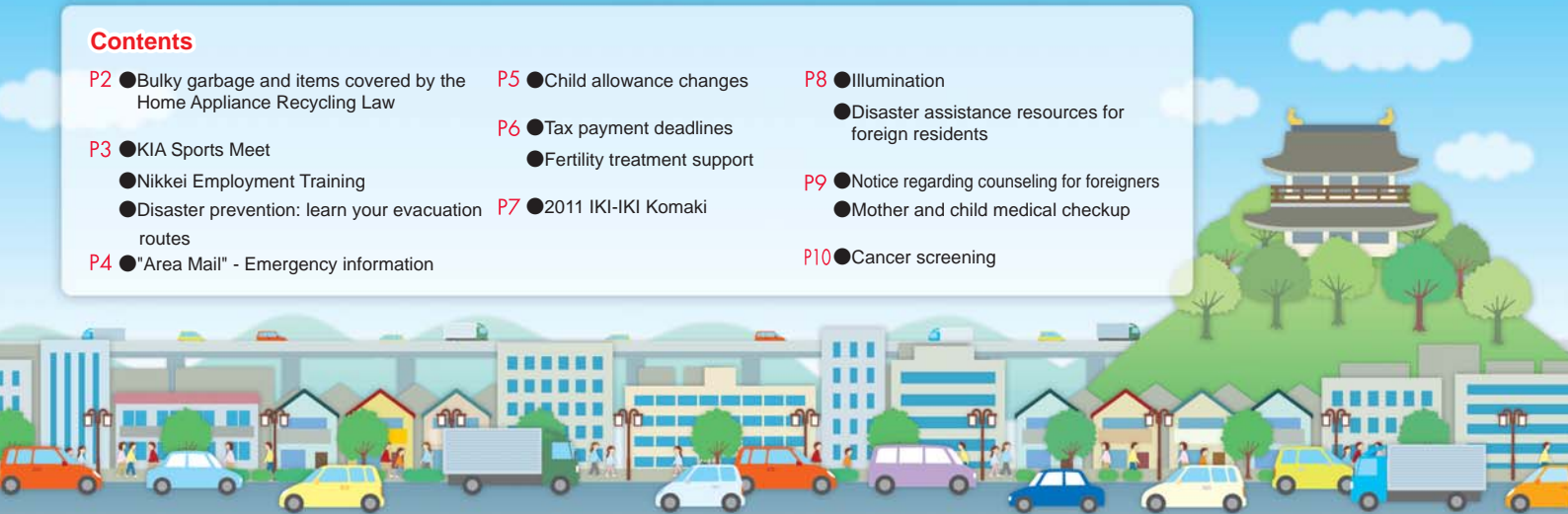
11
2011



Komaki Citizens' Festival - October 15 & 16, 2011

Contents

- | | | |
|---|-------------------------------------|--|
| P2 ● Bulky garbage and items covered by the Home Appliance Recycling Law | P5 ● Child allowance changes | P8 ● Illumination |
| P3 ● KIA Sports Meet | P6 ● Tax payment deadlines | ● Disaster assistance resources for foreign residents |
| ● Nikkei Employment Training | ● Fertility treatment support | P9 ● Notice regarding counseling for foreigners |
| ● Disaster prevention: learn your evacuation routes | P7 ● 2011 IKI-IKI Komaki | ● Mother and child medical checkup |
| P4 ● "Area Mail" - Emergency information | | P10 ● Cancer screening |



Sorting/setting out recyclables and garbage

About **Bulky Garbage**



Bulky Garbage ※Legal revision may have modified the ranges of items covered.

Examples of bulky garbage (1,000 yen / item)	
Furniture, bedclothes, fixtures, kitchen furniture	Shutters, screen doors, chest, chairs, audio racks, cabinet, gas stoves, mirrors, shoe boxes, kotatsu tops, kotatsu frames, sideboards, carpets, sliding doors, cupboards, vanities, sofas, mats, wardrobes, kitchen tables, desks, hanging shelves, tables, doors, sinks, chests, sliding screens, futons, beds, bookshelves, bookcases, mattresses <i>(except spring mattresses)</i>
Electrical and gas power machinery or tools	Microwave ovens, stereos, stoves, irons, fans, microwaves, fax machines, sewing machines, word processors
Playground equipment, etc.	Tricycles, bicycles, skis, slides, swings, organs, electronic organs, baby strollers, laundry rods, laundry units, and similar items.

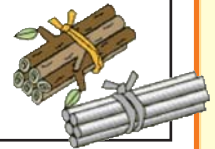
Examples: items handled as sets (1,000 yen per set)

Items for sale or use as a set

Boom boxes, kotatsu and kotatsu tops, speakers (one set of two), tables and chairs, laundry units (one set of two, pole is separate), mattresses and bed frames, guitars and guitar cases, sitting room set (tables and two chairs for one person), bunk beds (one top-bottom set), golf clubs and golf bags, skis (one pair of two, including two poles), etc.

Items treated as a single item if light enough for a single person to carry and disposed of when bundled up (Komaki does not collect items exceeding the standard length).

- Lumber (less than 15cm in diameter, from 60cm to 150cm in length)
- Wood (less than 10cm in diameter, from 60cm to 150cm in length)
- Pipe-shaped items (from 60cm to 150cm in length)
- Laundry pole, flag pole
- Corrugated metal (bound in a bundle, from 60cm to 150cm in length)



※ Any of these items exceeding **60cm** in any dimension will be considered bulky garbage.



Caution Air conditioners, laundry machines, TVs freezers, refrigerators, clothes driers, PCs, spring mattresses, motorcycles and farm equipment will not be collected by the city.

Bringing waste

Waste (burnable, non-burnable, and bulky garbage) may be brought by yourself directly to KOMAKI IWAKURA Sanitation Union Center. (Fee required) If you have any questions, please call the Sanitation Center.

KOMAKI IWAKURA sanitation union center

Address 2881-9, Noguchi, Komaki-shi (next to indoor swimming pool) **Contact** 0568-79-1211

Hours Monday to Friday 9:00 to 12:00 and 13:00 to 16:00 (Closed weekends and holidays)

- What you can bring: burnable, non-burnable, and bulky garbage
- Fees: Burnable/non-burnable garbage: 127 yen/10kg, Bulky garbage: 165 yen/10kg

Disposing of bulky garbage

① Please call the bulky garbage reception center.

Hours: 9:00 to 17:00 (except weekends, holidays and the New Year holidays)

0120-530-415
(Cell Compatible)

● Up to 5 items are accepted at a time.

● Collected on the same day as plastic containers.

Please make a reservation between one month and one week before you want the trash to be picked up.

② Please tell the center the number, size and kind of bulky items with your name, address and telephone number. The center will let you know the collection date, the place to put the bulky garbage, and your reception number.

③ Purchase a Komaki bulky garbage disposal fee ticket (sticker) at a retailer.

● The ticket (sticker) is sold at major supermarkets, convenience stores, shops and so on.

● Purchase the ticket (sticker) only after making a reservation. **(Tickets are non-refundable)**

● Write the reception number or your name on the ticket (sticker) and affix it so that it can be seen easily.

④ Please place the garbage at the location indicated by the operator by 8:30am on the day of collection.

● Collection does not require your attendance.

● Reusing bulky garbage

Items with the bulky garbage fee ticket affixed which were disposed may be reused. Wooden furniture, may be repaired at Eco-House Komaki and made available for reuse.

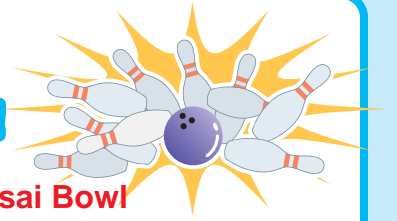
● Changing or canceling a reservation

At least one week before the collection date: Bulky Garbage Reception Center Tel. 0120-530-415
Six days or less from the collection date: Recycle House Tel. 0568-78-3631

Inquiries Waste Management Section TEL.0568-76-1187

KIA Sports Meet

International bowling with multinational teams!



Date/time Nov 27 (Sun) 9:30 to 12:30

Address Komaki Kokusai Bowl

Open to People elementary school age and older interested in international exchange

Number of participants Japanese and foreign junior high school students and older: 60 each / Elementary students: 20 (Japanese: 10 / Foreigners: 10) Total: 140

Participation fees Elementary students: Members 300 yen / General 500 yen
Junior high students and older: Members 500 yen / General 1,000 yen

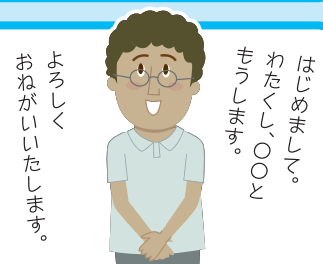
Application Fill out the required information on the forms available (at the Life Exchange Section, Civic Hall, and Community Centers) Nov 2 (Wed) to 25 (Fri) and apply directly with the participation fees. ※Closed when capacity filled
※A bus will be available for the day of the event from the Civic Hall parking lot. Reservation required when applying
※Sundays, Mondays, holidays, and 12:00 to 13:00 excluded

Inquiries Komaki International Association (KIA) Administration Office TEL0568-76-0905 E-mail kia@ma.ccnw.ne.jp

Nikkei Employment Training

Come study needed workplace Japanese with us!
Welcoming participation of all. Apply at Hello Work Kasugai

Eligibility Foreigners aged 16 and above that have a status of residence



Venue	Start	End of studies	Day of week/times of study
Tobu Community Center, Komaki City	Oct 28 (Fri)	Mar 9 (Fri)	Tue to Fri, 19:15 to 21:15
Komaki Civic Center, Civic Hall	Dec 2 (Fri)	Mar 9 (Fri)	Tue to Fri, 9:15 to 12:15
			Tue to Fri, 13:15 to 16:15

Inquiries JICE (Japan International Cooperation Center), Chubu Office TEL052-201-0881

Disaster Prevention Topics 6

Learn your evacuation routes

Komaki City has designated the evacuation facilities/areas for earthquake or storm damage in preparation for possible emergencies. Just in case such an event should occur, it is a good idea to walk to the nearest evacuation facility/area in order to learn the evacuation route. It also helps to talk with other members of your family to make sure everyone goes to the same place. The routes we can normally use without issue to reach the evacuation center may become blocked by falling brick walls or signs, so please select several evacuation routes based on an understanding of potential dangerous locations.

Please see the Komaki municipal website for information regarding evacuation centers.

<http://www.city.komaki.aichi.jp/contents/10031070.html>



Inquiries Disaster Prevention Division, Fire Department TEL.0568-76-0247(Direct)



"Area Mail" - Emergency Information

Komaki City has begun to provide information during disasters using NTT Docomo "Area Mail" emergency notifications. Area Mail is a system to distribute the Japan Meteorological Agency's emergency earthquake information and Komaki City's emergency/evacuation information to people in Komaki City.

Reception conditions

To receive the Area Mail you must be in the Komaki City area, have an NTT Docomo phone that supports Area Mail, and have the reception setting activated.

※Check the NTT Docomo website to find out which phones support the service.

<http://www.nttdocomo.co.jp/service/safety/areamail/>

Features

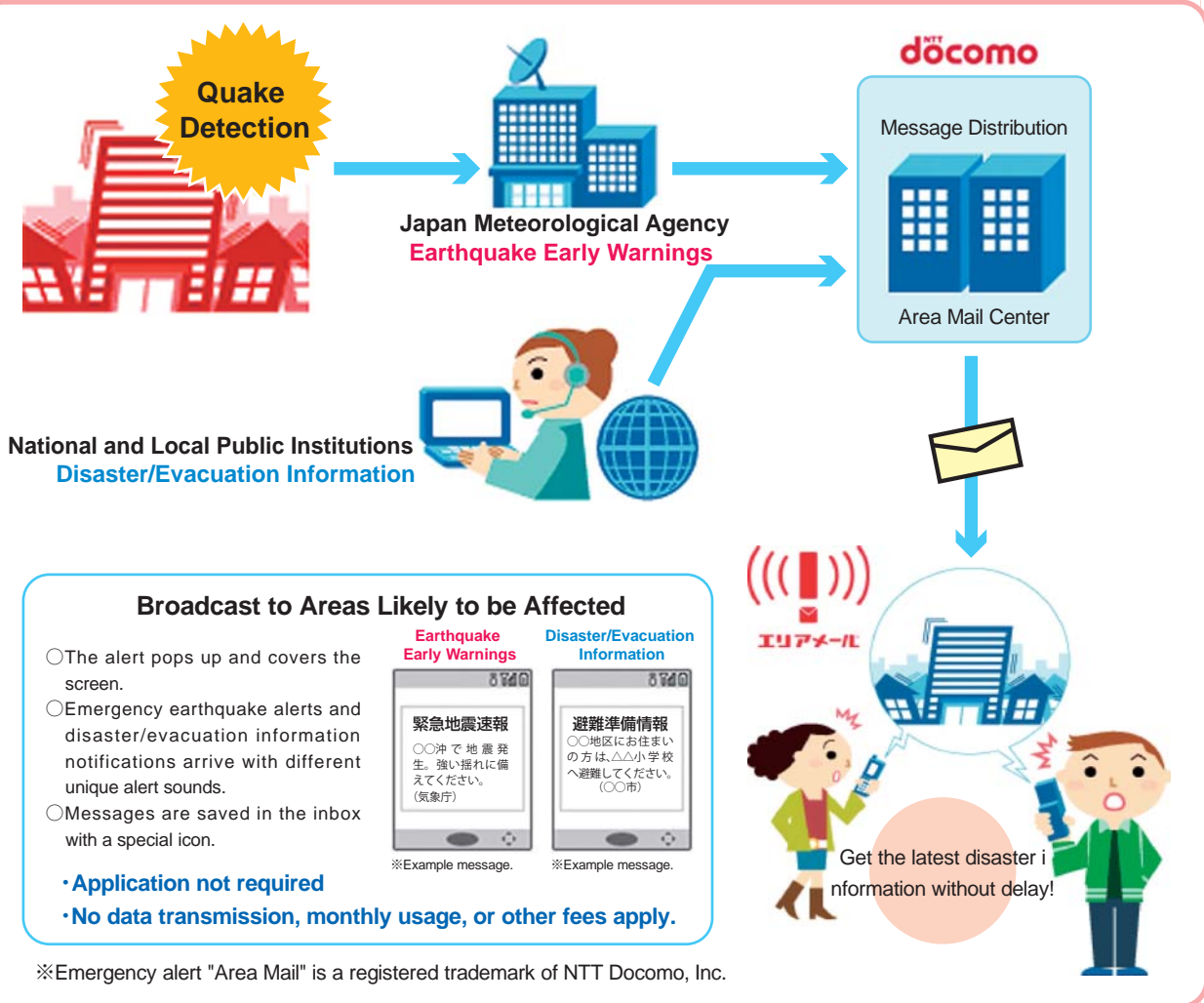
There is no need to register in advance if you have activated the feature on your phone.

There are no monthly fees, data transmission fees, or costs associated with the service.

People temporarily in Komaki such as commuters, students and tourists will also receive the information.

Content

Emergency information of a high importance such as Evacuation Preparation Information, Evacuation Recommendations, Evacuation Instructions, Landslide Alert Information, Tokai Earthquake Forecasts and so on.



Inquiries Disaster Prevention Division TEL.0568-76-0247

Child allowance changes

Based on the Act on Special Measures
Concerning Child Allowances in FY 2011
(Oct 1, 2011 to Mar 31, 2012)

Major revisions

○ Amount to be paid per child

Eligibility	Current amounts Until the amount for Sep 2011	Revised (Oct 2011 to Mar 2012)
Less than 3 years old	Uniform monthly amount: 13,000 yen	Monthly amount: 15,000 yen
3 years old or older Before completing elementary school		Monthly amount: 10,000 yen
(First and second child)		Monthly amount: 15,000 yen
(Third and subsequent child)		Monthly amount: 10,000 yen
Junior high student		Monthly amount: 10,000 yen

- **Overview**
- **Eligibility** ————— Father, mother or other guardian that is the primary provider for a child born after Apr 2, 1996 being raised in Japan.
 - **Benefit period** ————— Oct 2011 to Mar 2012
 - **Month of Payment** — Feb 2012 (the amount for Oct to Jan), and Jun 2012 (the amount for Feb and Mar)

Conditions

- ◆ Child must reside in Japan (except for children studying abroad).
 - ◆ Child allowances for children in children's homes shall be given to those running the facility except in cases of short-term residence.
 - ◆ The allowance will be supplied to guardians of minors if they meet the same requirements as those for parents (custody/livelihood).
 - ◆ If the parents reside overseas and have designated parents for the children (such as grandparents) and the designated parents meet the same requirements as those for parents (custody/livelihood) the designated parent will receive the allowance.
 - ◆ If multiple people are eligible by meeting the requirements, the allowance is provided to the person coresident with the child.
(※ Limited to separated parents discussing divorce. In the case of a parent living separate from the family for sake of work, the allowance is provided to the primary provider.)
- ※ Primary provider: the eligible person with greater income ※ Custody: person raising the child
 ※ Same livelihood: living together (temporary separation, such as for work, or ongoing custody of a child are both considered to have the same livelihood).

You must reapply for the allowance! (Even current or past recipients must reapply)

- Forms will be sent to parents of children thought to be eligible at the end of Oct 2011 (tentative).
(If you have not received a form by the end of Oct, please contact the Child Welfare Division).
- ※ Komaki City may not accept application in some cases, such as parents of children receiving the information wherein the primary provider is not a registered Komaki resident.
- ※ If the parent that is the primary provider is a civil servant, apply to the place of work.
(Civil servants should check whether they need to apply to Komaki City if the work for an IAI, NUC or have been dispatched to another institution.)

Application Procedure/Period

- How to apply
 - Komaki City Hall: Apply directly to the Child Welfare Division office (1st floor, South Bldg., City Hall)
 - By postal mail: (people who received an application form by mail from City Hall; however, you cannot apply for children being raised that live separately by mail.)
- Application deadline:

Categories	Application deadline:	Benefit Period
Eligible persons residing in Komaki as of Oct 1 (Including current or past recipients)	Mar 31 (Sat) 2012 (Applications at the office not accepted on days City Hall is closed. Postal mail accepted postmarked no later than Mar 31 (Sat))	Oct 2011 to Mar 2012
Eligible persons giving birth or moving into Komaki after Oct 1	Within 15 days	From the month after the application to Mar 2012

※ People moving away from Komaki after Oct 1 must apply to Komaki City before moving. (The destination municipality will provide the allowance for the month following the application.)

- The system is not scheduled from Apr 2012.
- The Act on Special Measures does not have a limit based on income but is likely to be subject to income limits in the future replacement system.

Calculated examples: 1 child (grade 2 junior high school student)

Oct 2011 payment

Feb 2012 payment

52,000 yen (For Jun to Sep: 13,000 yen times 4 months) **40,000 yen** (For Oct to Jan 2012: 10,000 yen times 4 months)

Inquiries Parenting Support, Child Welfare Division TEL. 0568-76-1129

Next tax payment deadline: Nov 30 (Wed)

- National Health Insurance Tax (6th term)
- Nursing Care Insurance Fees (5th term)
- Late-Term Medical Insurance for the Elderly (4th term)

Submit your payments promptly! Smooth functioning of the system requires that everyone make timely payments. Avoid missed payments by setting up direct debit payments from your bank account.

If you have already set up direct debit payments for your taxes, be sure that your account has sufficient funds available by the day before payment is due.

☆If your payment is late ...

If your payment is late the City Hall will send you an invoice (reminder) again to notify you of overdue payment. City employees may also visit your home. Please pay early when you remember. You may have a sound reason for your delayed payment, but the City Hall Tax Office will not know this if you do not consult with or contact us. Please notify us of any special circumstances as soon as possible.

If you are too busy during the day on weekdays to make your payment...

1. The City Hall Income Tax Office will be open on the following Sundays to answer tax-related questions and accept payments.

◎ **Date/time: Nov 13 (Sun) and Nov 27 (Sun) 8:30 to 17:15**

2. Tax payments will be accepted at the Komaki Station branch office every day.

Please stop by at your convenience.

◎ **Reception hours: 8:30–17:15**

※ The Komaki Station branch office is closed during the New Year holidays.

3. If your payment slip has a barcode, you may pay your taxes at a local convenience store.

※ Convenience store payments can only be made prior to the payment due date.

Inquiries Tax Office TEL0568-76-1117/0568-76-1118(Direct)

FY2011

Komaki Fertility Treatment Support Program

Komaki city offers financial support for costs related to fertility examinations, fertility treatment and artificial insemination (excluding in vitro fertilization and microinsemination). ※ This program also covers second and further pregnancies.

Medical procedures covered

Fertility examination, fertility treatments (except for certain fertility treatments), and artificial insemination

※ Includes expenses not covered by medical insurance that are doctor approved.

※ Specific fertility treatments are subsidized by the prefecture (in vitro fertilization and microinsemination) so please ask at the Health Center.

Open to

Couples with a registered address in the city on the application date, without overdue residential taxes (prefectural and municipal tax, fixed asset tax) or National Health Insurance tax.

Subsidy period / amount

Support is limited to 50,000 yen, once per fiscal year, for expenses not covered by insurance incurred from examinations and treatment approved by a medical practitioner received at a medical facility. Fertility examinations, fertility treatment (excluding specific fertility treatments) and artificial insemination performed during this fiscal year from March 1, 2011 to the last day of February, 2012 are covered.

Application

By Mar 15 (Sat) 2012 ※ Application forms must be received before the end of February

※ If either one of the couple has received a general fertility treatment cost subsidy from another municipality within Aichi Prefecture in fiscal 2011, you will be unable to apply.

※ People moving to Komaki can only apply for subsidy against costs incurred after the day they move.

※ People moving away from Komaki are only covered until the day they move away, so complete application before moving.

Inquiries Health Center (Hoken Center) TEL0568-75-6471/FAX0568-75-8545

2011 IKI-IKI Komaki

Nov 19 (Sat), 20 (Sun) 10:00 to 15:00

Venue: Komaki Civic Center & Hall

* Lifestyle Exhibition *

Food education starts from "Mottainai"

Chef: Kumahachi Morino

19 (Sat) from 13:30

Capacity: 1000

Cost: Free

(Ticket required)

<<How to apply for tickets>>

Tickets are available from 9:30am, Oct 20 (Thu) at the Life Exchange Section, Tobu, Ajioka and Kitasato Community Centers, Manabi Sozo Hall, Civic Center, and Seibu/Nambu Community Centers.



* Lifestyle Exhibition *



- Local consumer group panel exhibition
- Toy repair booth
- Blade sharpening booth
- Quiz rally

Morning and afternoon both days

Prizes for 150 people

* Farming Fair *



- Produce exhibition: apples, saury sushi, etc.
- Direct sales of produce: persimmon, Nagoya Cochin chicken, etc.
- Rice consumption promotion booth: "mochi-tsuki"
- Forestry promotion booth: seedling distribution (charity)

* Environment Fair *



Come try out our many activities!

- Make a reusable shopping bag
- Recycle old paper
- Crafts
- Eco-car display



* Fire Prevention Fair *



- Experience firefighting, earthquakes, and thick smoke
- Child rescuer
- Ambulance display and emergency response demo

Fun for families with children!!



Inquiries Life Exchange Section TEL.0568-76-1119

Komaki Station Illumination



This year we are working to reduce power consumption through reduction of operated hours and use of LED lighting. Please come out and enjoy Komaki like you've never seen it before.

Dates Nov 19 (Sat) to Dec 25 (Sun) 17:00 to 22:00

Venue Komaki Station Square and surrounding streets

Opening Event

Let's light up the night with beautiful songs and bells performed by elementary students (the "Honjo Enjoy Team").

Date/time Nov 19 (Sat) 17:00 to 18:00

Venue Lapio SW Corner ※Pre-registration not required

Inquiries Urban Policy Division TEL.0568-41-0037

Foreign Resident Disaster Support Information Website Online!

In addition to the ongoing disaster support information for foreign residents provided by the "Multilingual Support Center for the Tohoku Earthquake out at Pacific Ocean", useful multilingual information for foreign residents in the case of a disaster, new support information and other related information are available for your perusal.

Foreign Resident Disaster Support Information Website
<http://www.clair.or.jp/tabunka/shinsai/>



Notice regarding counseling for Foreigners

Life Exchange Section (Seikatsukoryu-ka),
South Government Office Bldg 2F, City Hall 9:00 - 17:00 (excluding 12:00 - 13:00)

Portuguese:
Mon-Fri

Mon/Tues/Thurs
Spanish & English

In addition, the Health Insurance and Pension Department and Child Welfare Division have staff available to help in Portuguese (9:00 to 17:00) the Welfare Division in Portuguese (9:30 to 16:30) and the Citizen Division in Chinese (9:00 to 16:30).

Inquiries Life Exchange Section TEL.0568-76-1173



Medical checkup information



Mother/child Health Examination Calendar

※Make sure to bring your Maternal and Child Health Handbook.

Examination	Schedule	Venue	Time	Eligibility/Description/Application/etc.
Health examinations and BCG vaccinations for 4-month-old infants, dental examinations for mothers	Nov 1 (Tue), 8 (Tue)	Health Center (Hoken Center)	Reception 13:05 to 13:55	Children born in Jun, Heisei 23
	Nov 15 (Tue), 22 (Tue), 29 (Tue)			Children born in Jul., Heisei 23
Health examinations for 18-month-old infants	Nov 4 (Fri), 11 (Fri), 25 (Fri)	Health Center (Hoken Center)	Reception 13:05 to 14:15	Children born in May, Heisei 22
Dental examinations for children aged 2 years, 3 months	Nov 10 (Thu), 24 (Thu)	Health Center (Hoken Center)	Reception 9:00 to 10:10	Children born in Aug, Heisei 21
Health examinations for 3-year-old children	Nov 2 (Wed), 9 (Wed), 16 (Wed)	Health Center (Hoken Center)	Reception 13:05 to 14:15	Children born in Nov, Heisei 20
Niko niko cavity prevention class	Nov 30 (Wed)	Health Center (Hoken Center)	10:00 to 11:00	20 Children that have begun to grow teeth and their parents
Baby food class, Gokkun (swallowing) level	Nov 2 (Wed)	Health Center (Hoken Center)	10:00 to 11:00	27 sets of parents 4 months after giving birth
Baby food class, Kami-kami (biting) level	Nov 25 (Fri)	Health Center (Hoken Center)	10:00 to 11:00	21 sets of parents 9 months after giving birth
Weekday class for new moms and dads Theme: Food	Dec 8 (Thu)	Health Center (Hoken Center)	10:20 to 15:00	20 women 5 to 7 months pregnant and their husbands Mothers may participate alone
				<ul style="list-style-type: none"> ●Description: Talking about food for pregnancy and cooking lesson, Talking about oral care and dental checkup. ●What to bring: Parent and child (maternal and child) health handbook, apron, half a cup of uncooked rice, writing utensil, toothbrush, cup, hand mirror, free dental examination ticket for adults (pregnant women). ●Application: apply to the Health Center at least one week before the day,
Sunday class for new moms and dads Theme: Are you ready to give birth?	Dec 4 (Sun)	Health Center (Hoken Center)	10:00 to 12:00 (Reception from 9:30)	30 sets of women 6 months pregnant or later and their husbands Mothers may participate alone
				<ul style="list-style-type: none"> ●Description: Talk about breastfeeding, giving birth and childcare, the role of the father, and experiencing pregnancy, practice holding baby dolls. ●What to bring: Parent-child (maternal and child) health handbook, writing utensils ●Application: Applications accepted from Oct 17 (Mon) (apply to the Health Center at least one week before the day)
Nursing counseling	Nov 16 (Wed), 29 (Tue) ... 9:00 to 12:00 Nov 7 (Mon) ... 13:00 to 16:00			
Parenting, pregnancy, and giving birth health counseling	Nov 11 (Fri)	Kitasato Jidokan	10:00 to 11:15	<ul style="list-style-type: none"> ●Description: Consultation regarding worries/concerns for raising children, body measurements, blood pressure measurement, urine inspection (optional) ●Fees: Free
	Nov 18 (Fri)	Komaki Jidokan		
	Nov 29 (Tue)	Shinooka Jidokan		
Baby visit	About 2 or 3 months after birth, a health contact and veteran health contact will come visit your home with a few gifts to congratulate you on the birth of your baby. (You will be contacted in advance to set a convenient time.)			

※Health examination admission times differ depending on date of birth. Please refer to the health examination schedule that will be sent in the mail.

Inquiries Health Center (Hoken Center) TEL.0568-75-6471

 Medical checkup information 

* Screening tests for cancer and osteoporosis

	Type	Schedule	Time	Venue	Eligibility/Description/Application/etc.	
Group screening	Stomach cancer screening (Indirect stomach X-ray)	Jan 13 (Fri) Jan 24 (Tue)	9:00 to 11:00	Health Center (Hoken Center)	Registered Komaki residents over 40 years old ● Capacity: 40 people ● Fee: 930 yen ● Application: from Oct 20 (Thu) at the Health Center	
	Colorectal cancer screening (Fecal occult blood test)	※ A feces sample container will be collected on the day stomach cancer screening is implemented.		Health Center (Hoken Center)	Registered Komaki residents over 40 years old ● Fees: 520 yen ● Application: Health Center	
	Breast cancer screening (Mammography)	Nov 7 (Mon) Dec 8 (Thu) Dec 19 (Mon)	9:00 to 15:30	Health Center (Hoken Center)	Registered Komaki residents over 40 years old (1) Persons over 40 born in odd years (2) Persons born in even years that did not receive an examination in Heisei 22 (3) Persons turning 40 that were born in Showa 46 ● Capacity: 85 people ● Fees: 1,200 yen ● Application: Health Center * Persons that have received a free coupon may apply.	
	Cervical cancer screening (Cytodiagnosis)	Dec 20 (Tue)	14:00 to 15:30	Tobu Community Center	Registered Komaki residents over 20 years old (1) Persons over 20 born in odd years (2) Persons born in even years that did not receive an examination in Heisei 22 ● Capacity: 100 people ● Fees: 750 yen ● Application: from Oct 20 (Thu) at the Health Center * Persons that have received a free coupon may apply.	
	Osteoporosis screening	Jan 19 (Thu)	13:30 to 15:30	Tobu Community Center	Registered Komaki residents over 30 years old ● Capacity: 75 people ● Fee: 830 yen ● Application: from Oct 20 (Thu) at the Health Center	
	Lung cancer (Sputum test)	Consultation period until Feb 24 (Fri) Heisei 24		Health Center (Hoken Center)	Registered Komaki residents meeting any of the following: (○ 50 years old or old with smoking index of 600 or higher ○ 40 years old that has coughed up blood within the last 6 months) ● Fees: 470 yen ● Application: from Feb 17 (Fri) at the Health Center	
Individual examination	Cervical cancer facility screening (Cytodiagnosis)	Consultation period until Mar 31 (Sat) Heisei 24		Local Ob/Gyn clinic	Registered Komaki residents over 20 years old (1) Persons over 20 born in odd years (2) Persons born in even years that did not receive an examination in Heisei 22 ● Fees: cervical cancer examination 1,250 yen, cervix/body cancer examination 2,350 yen (Only for people determined to require the examination by the physician) ● Capacity: 100 people ● Application: Health Center * Persons that have received a free coupon may apply directly to a medical facility.	
	Gastric cancer/ Colorectal cancer Combination screening	Consultation period until Feb 14 (Tue) Heisei 24		Local medical institution	Registered Komaki residents over 40 years old ● Fee: 4,800 yen	● Application: Local medical institutions
	Prostate cancer screening				Registered Komaki residents over 50 years old ● Fee: 1,500 yen	
	Chest X-ray				Registered Komaki residents over 40 years old ● Fee: 1,310 yen	
Hepatitis screening	People born between April Showa 46 and March Showa 47 ● Fees: Free					

Regarding breast cancer / cervical cancer screening

※ From Heisei 19 we have promoted screening once every two years based on even and odd years (using the Japanese calendar).

Thank you for your understanding and cooperation.

※ Free coupons expire March Heisei 24 at the end of this fiscal year. Use your free examination ticket early, before it runs out.

Inquiries Health Center (Hoken Center) TEL.0568-75-6471

※ Please see the relevant service counter for more details regarding any of the items contained herein.

Edited
and
Published

Komaki City Hall Department of Civil Industry Life Division

1-1 Horinouchi, Komaki-shi, Aichi-ken 485-8650 TEL: 0568-76-1173 FAX: 0568-72-2340

<http://www.city1.html1.komaki.aichi.jp/contents/90000011.html>

Printed on recycled paper for the sake of the environment.



Printed with soy ink for the sake of the environment.