

Life Information News KOMAKI

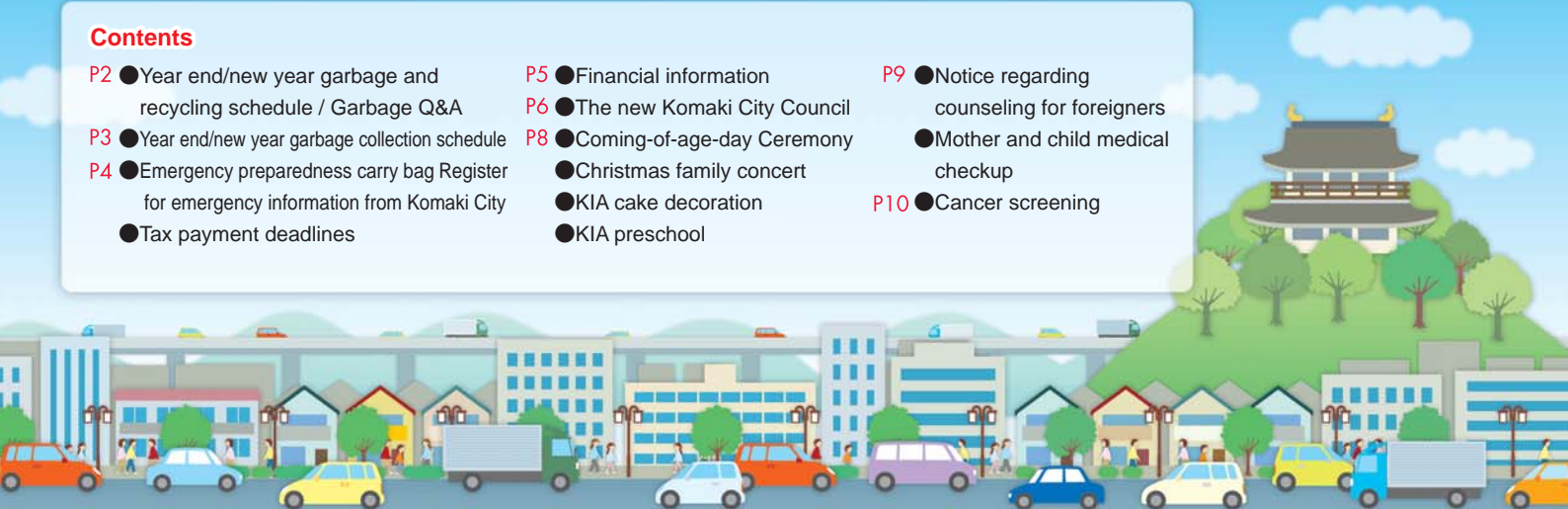
12
2011



Illumination at the station

Contents

- | | | |
|---|--|---|
| P2 ●Year end/new year garbage and recycling schedule / Garbage Q&A | P5 ●Financial information | P9 ●Notice regarding counseling for foreigners |
| P3 ●Year end/new year garbage collection schedule | P6 ●The new Komaki City Council | ●Mother and child medical checkup |
| P4 ●Emergency preparedness carry bag Register for emergency information from Komaki City | P8 ●Coming-of-age-day Ceremony | P10 ●Cancer screening |
| ●Tax payment deadlines | ●Christmas family concert | |
| | ●KIA cake decoration | |
| | ●KIA preschool | |





Ecorin

Year end/new year garbage and recycling Q&A

Thank you for your cooperation in the separation of garbage and recyclables. There are many families that will dispose of a larger than normal amount of waste during year end and new year house cleaning. Allow us to answer some of the common questions during this time of year.

FAQ Q1 Will garbage be collected during the year end/new year season?



A ▶▶▶ No garbage will be collected from Dec 31 (Sat) to Jan 3 (Tue).

The last collection day of this year and the first day of the new year

The last collection day depends on the category and where you live. Check the collection calendar and place your bagged recyclables and garbage out at the collection point by 8:30 on the designated collection day. If you do not have a collection calendar, they are available at the Waste Management Section, community centers and the City Center.

FAQ Q2 Where can I take garbage if I want to dispose of some? What can I bring? When can I go?



A ▶▶▶ Garbage and recyclables must be brought to different locations if you will bring it there yourself.

- **Garbage:** KOMAKI IWAKURA Sanitation Union Center.
- **Recyclables:** Recyclable collection station

KOMAKI IWAKURA Sanitation Union Center

- Address: 2881-9, Noguchi, Komaki-shi (next to indoor swimming pool)
- Contact: 79-1211
- Application period: Monday to Friday
9:00 to 12:00 and 13:00 to 16:00

Year end is until Dec 30 (Fri) and

New year is from Jan 4 (Wed)

- Items that can be brought-in
Burnable garbage, non-burnable garbage, bulky garbage
- Disposal fees
Burnable garbage, non-burnable garbage: 127 yen/10kg
Bulky garbage: 165 yen/10kg

Recyclable collection site

- Address: 423 Komakihara-shinden (Tel. 73-6155)
- Application period excludes: Jan 1 to Jan 3 8:30 – 17:00

Year end until Dec 31 (Sat)

New year from Jan 4 (Wed)

- Items that can be brought-in:
Plastic containers, empty bottles, empty cans, metal garbage, PET bottles, old paper/cloth, fluorescent bulbs, used cooking oil
- ※ **Follow the instructions for disposing of garbage and recyclables, sort them into separate bags, and bring them to the disposal site.**

※The year end is expected to be busy, so please bring any garbage as early as possible.

FAQ Q3 How do I dispose of bulky garbage?



A ▶▶▶ Bulky garbage is handled by one of the following methods:

- Phone to the bulky garbage reception center to make a reservation and pay a collection fee of 1,000 yen per item.
 - Hours: 9:00 to 17:00 (except weekends, holidays and the New Year holidays)
 - Up to 5 items are accepted at a time.
 - To be collected on the same day of the week as plastic containers.
Please make a **reservation between one month and one week before** you want the trash to be picked up.
The year end is until Dec 28 (Wed) and the new year is from Jan 4 (Wed)
- Bring it to the environmental center by yourself.

If anything is unclear regarding garbage separation, or for other inquiries:

Inquiries

Waste Management Section

TEL0568-76-1187

Year end/new year garbage collection schedule

※Please place burnable garbage, plastic containers, non-burnable garbage, old paper/cloth, cans, metal garbage and PET bottles at the indicated locations by 8:30am on the day of collection.

Types of garbage and recyclables		Normal Collection Day	Final collection day	First collection day
Burnable garbage		Monday and Thursday	Dec 29 (Thu)	Jan 5 (Thu)
		Tuesday and Friday	Dec 30 (Fri)	Jan 6 (Fri)
		Wednesday and Saturday	Dec 28 (Wed)	Jan 4 (Wed)
Plastic containers		Monday	Dec 26	Jan 9
		Tuesday	Dec 27	Jan 10
		Wednesday	Dec 28	Jan 4
		Thursday	Dec 29	Jan 5
		Friday	Dec 30	Jan 6
Non-burnable garbage	First/third week	Monday	Dec 19	Jan 16
		Tuesday	Dec 20	Jan 17
		Wednesday	Dec 21	Jan 4
		Thursday	Dec 15	Jan 5
		Friday	Dec 16	Jan 6
	Second/fourth week	Monday	Dec 26	Jan 9
		Tuesday	Dec 27	Jan 10
		Wednesday	Dec 28	Jan 11
		Thursday	Dec 22	Jan 12
		Friday	Dec 23	Jan 13
Old paper/cloth	First/third week	Monday	Dec 29 (Thu)	Jan 16
		Tuesday	Dec 29 (Thu)	Jan 17
		Wednesday	Dec 21	Jan 4
		Thursday	Dec 15	Jan 5
		Friday	Dec 16	Jan 6
	Second/fourth week	Monday	Dec 26	Jan 9
		Tuesday	Dec 27	Jan 10
		Wednesday	Dec 28	Jan 11
		Thursday	Dec 22	Jan 12
		Friday	Dec 23	Jan 13
Empty bottles Empty cans Metal garbage PET bottles	First/third week	Monday	Dec 19	Jan 16
		Tuesday	Dec 20	Jan 17
		Wednesday	Dec 21	Jan 4
		Thursday	Dec 15	Jan 5
		Friday	Dec 16	Jan 6
	Second/fourth week	Monday	Dec 26	Jan 9
		Tuesday	Dec 27	Jan 10
		Wednesday	Dec 28	Jan 11
		Thursday	Dec 22	Jan 12
		Friday	Dec 23	Jan 13
Fluorescent bulbs	Once per month	Dec 29 (Thu)	Jan 30 (Mon)	
Bulky garbage	To have bulky garbage collected before the end of the year, apply by phone (0120-530-415) by Dec 14 (Wed)			

**Disaster Prevention
Topics 7**

Emergency preparedness carry bag

On September 20, 2011 (Tue) at 3:45 pm, the approach of Typhoon Roke caused torrential downpours resulting in the issuance of evacuation advisories in areas near mountains that faced the possibility of landslides. Those that evacuated spent several hours at an evacuation center until the advisory was lifted.

It is important to be prepared in case of emergency, so that you will be able to evacuate in a timely fashion. You should prepare emergency goods for during an emergency (primary goods) and for daily living for at least three days until rescue materials can reach you after an emergency strikes (secondary goods). Please prepare as appropriate for your family.


Primary goods

Put the goods in a backpack to allow you to use both hands freely so that you can carry it away at any time.

Valuables (cash, bankbooks, health insurance certificates), portable radio, flashlight, emergency medical supplies, emergency foods, water, other (clothes, towels)

Secondary goods

Things you will need to survive by yourself for a few days until normal circumstances are restored. Prepare a sufficient amount for at least three days.

Food, drinking water (about 3 liters per person per day), fuel (simple stove, solid fuel, etc.), and other everyday goods (toiletries, cling film, newspaper, etc.)

Municipal Website: Disaster Prevention Information <http://www.city.komaki.aichi.jp/contents/ctg20.html>



Sign up for notifications! Komaki Disaster Information Mail

Receive emails with emergency information from the Japan Meteorological Agency and Komaki City. Please register with your cellphone or PC by sending a blank email to the email address shown here or with the QR code.



[mail address] t-komaki@sg-m.jp

[QR Code]

Inquiries

Disaster Prevention Division, Fire Department
TEL.0568-76-0247 (Direct)

Next tax payment deadline: Dec 26 (Mon)

- Fixed Asset & City Planning Tax (3rd term)
- National Health Insurance Tax (7th term)
- Nursing Care Insurance Fees (6th term)
- Late-Term Medical Insurance for the Elderly (5rd term)

This month the payments are due on the 26th (Mon). Submit your payments promptly! Smooth functioning of the system requires that everyone make timely payments. Avoid missed payments by setting up direct debit payments from your bank account. If you have already set up direct debit payments for your taxes, be sure that your account has sufficient funds available by the day before payment is due.

If you are too busy during the day on weekdays to make your payment...

1. The City Hall Income Tax Office will be open on the following Sundays to answer tax-related questions and accept payments.
 - ◎ **Date/time: Dec 11 (Sun), Dec 18 (Sun), Dec 25 (Sun) 8:30 to 17:15**
2. Tax payments will be accepted at the Komaki Station branch office every day. Please stop by at your convenience.
 - ◎ **Time: 8:30 to 17:15** ※The Komaki Station branch office is closed during the New Year holidays
3. If your payment slip has a barcode, you may pay your taxes at a local convenience store.
 - ※Convenience store payments can only be made prior to the payment due date.

Inquiries

Tax Office TEL0568-76-1117 / 0568-76-1118(Direct)

Municipal Government Financial Information Komaki City's finances in 2010

General budget revenue

The general budget is the core municipal budget, covering all parts of the budget excluding special budgets.

60% of revenue is municipal taxes

Municipal taxes are civic taxes on individuals and corporations, fixed asset taxes on land or buildings, and urban planning taxes.

Municipal debts

Money the city has borrowed. Rather than cover expenses for parks, roads and other longer-term use facilities with the limited taxes each year, money has been borrowed to fairly rationalize the costs by spreading them to future users.

General account expenditures

General account expenditures are divided by purpose to make it easy to understand how the money that comes in is used.

Expenditures fall into categories including Public Welfare expenditures for social projects; Public Works expenditures to build, improve and maintain public roads, water spaces, bridges and parks; Education expenditures that cover elementary and junior high schools, kindergartens and life-long learning initiatives; and Operating expenditures that cover general management costs.

Special accounts

The special accounts are budgets for operation of projects using specific revenues. In fiscal 2010 there are 12 special accounts that have accounts settled on a per-project basis.

Enterprise accounts

The enterprise account is accounted for using an independent profit model for local public enterprises that cover expenses with the income they generate. "Revenue earnings and expenditure" is income and expenses related to administration activities and "Capital earnings and expenditures" is income and expenses related to buildings and facilities.

Urban planning tax

The urban planning tax is imposed as an earmarked tax for the provision of urban planning projects (roads, parks, waterworks facilities, etc.) and land zoning regulation projects.

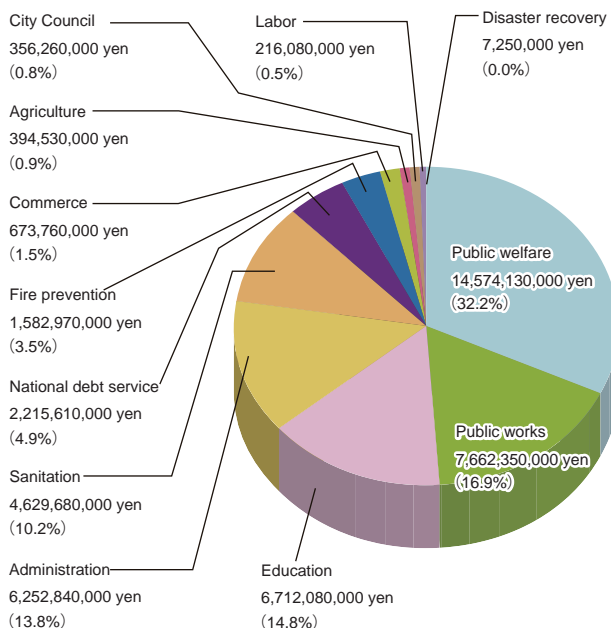
Assigned projects and amount for the urban planning tax

Urban planning tax revenues		2,284,680,000 yen
%	Road projects	119,890,000 yen
	Park maintenance	6,610,000 yen
	Land zone regulation	1,011,450,000 yen
	Public waterworks	889,890,000 yen
	Public debt service	256,840,000 yen

General account expenditures 45,277,540,000 yen

Per capita 294,954yen Per household 727,818 yen

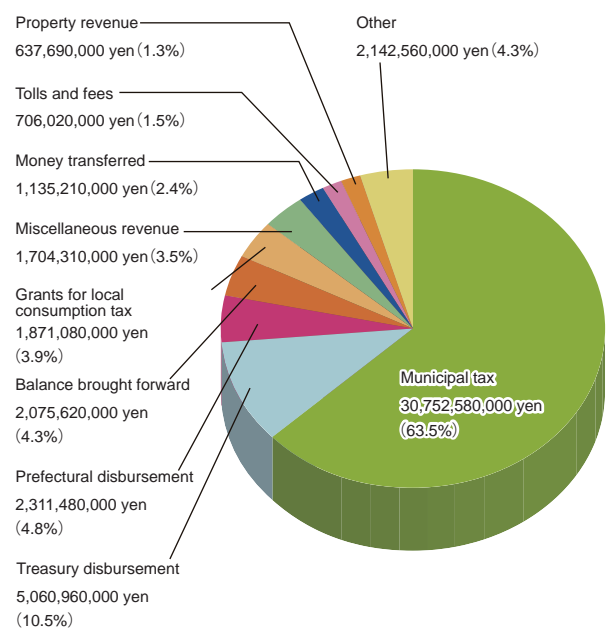
((Population (incl. foreigners) as of March 31, 2011: 153,507 / 62,210 households)



General budget revenue 48,397,510,000 yen

Municipal tax per capita 200,333 yen Municipal tax per household 494,335 yen

((Population (incl. foreigners) as of March 31, 2011: 153,507 / 62,210 households)



The New Komaki City Council

Greetings

We thank you, the people of Komaki, for your everyday understanding and support of your city government.

It is with a profound sense of both honor and responsibility that we accept the duties entrusted to us upon our selection as Chairman and Vice Chairman of the City Council during the 4th special council session.

Although we may not be the brightest or most talented individuals, it is our intent to hold nothing back in our efforts to live up to the expectations of the more than 150,000 citizens of Komaki.

Today, we face the ongoing upheavals of the structural transformation of our society including issues arising from our graying demographic trends and the retirement of the baby-boomer generation resulting in diversification in lifestyles, choices and values. Under these circumstances, the role of City Council has grown in step with our responsibility to determine whether the needs of our citizens are being properly reflected in the operations of the administration. Komaki City works on the basis of the principles laid out in the 6th Komaki Comprehensive Plan to rapidly advance projects and take on the issues that surround us, including the

construction of a new facility on the west side of the South Government Building. However, as we consider the unfortunate difficulties affecting the national economy that have arisen in the aftermath of the Tohoku earthquake and tsunami, we expect reduced corporate tax and other tax revenues. We have also heard that discussions are underway to reduce funds transferred to our region and to end certain projects.

We understand our responsibility to accomplish visible change in the Council, to maximize our effectiveness, and to ensure the administration responds to your needs, and it is our firm resolution to carry these goals to completion.

Thank you again, for your support and encouragement as we press on to greater levels.



Tsutomu Mizutani,
Chairman



Atsushi Funahashi,
Vice Chairman

16th Komaki City Council

①Political Party ②Number of times elected (age)
shown grouped by faction (without titles)
◎marks the faction leader - all information as of October 14



Tatsuya Suzuki
①Independent
②Elected 1 time (age: 59)



Noriaki Kojima
①Liberal Democratic Party of Japan
②Elected 2 times (age: 54)



◎Hidekazu Funahashi
①Liberal Democratic Party of Japan
②Elected 2 times (age: 58)



Tsutomu Mizutani
①Liberal Democratic Party of Japan
②Elected 5 times (age:62)



Shigeru Ito
①Independent
②Elected 2 times (age: 69)



Kimiko Kawashima
①Independent
②Elected 4 times (age: 70)



Hajime Kobayashi
①Independent
②Elected 5 times (age: 63)



Hiroyuko Ito
①Independent
②Elected 6 times (age: 71)

Makiseikai



Atsushi Osada
 ①Liberal Democratic Party of Japan
 ②Elected 1 time (age: 51)



Mamoru Inagaki
 ①Liberal Democratic Party of Japan
 ②Elected 1 time (age: 52)



Kazutoshi Kumazawa
 ①Liberal Democratic Party of Japan
 ②Elected 1 time (age: 54)



Hiroshi Niwa
 ①Liberal Democratic Party of Japan
 ②Elected 1 time (age: 58)



Kikuo Matsuda
 ①Liberal Democratic Party of Japan
 ②Elected 1 time (age: 59)



Shinichi Kawachi
 ①Independent
 ②Elected 2 times (age: 58)



Eiji Suzuki
 ①Liberal Democratic Party of Japan
 ②Elected 2 times (age: 40)



Katsumi Sawada
 ①Liberal Democratic Party of Japan
 ②Elected 2 times (age: 58)



Ryuzo Narita
 ①Liberal Democratic Party of Japan
 ②Elected 2 times (age: 61)



Osamu Tamai
 ①Independent
 ②Elected 2 times (age: 62)



Atsushi Funahashi
 ①Liberal Democratic Party of Japan
 ②Elected 2 times (age: 68)

Japan Communist Party Komaki Councilors



Daisuke Sato
 ①Japan Communist Party
 ②Elected 1 time (age: 32)



Miyoko Yasue
 ①Japan Communist Party
 ②Elected 5 times (age: 56)



Satomi Takeuchi
 ①Japan Communist Party
 ②Elected 6 times (age: 62)

New Komeito Party Komaki Councilors



Eriko Inagaki
 ①New Komeito Party
 ②Elected 2 times (age: 58)



Akiko Kato
 ①New Komeito Party
 ②Elected 3 times (age: 54)



Tetsuya Hashimoto
 ①New Komeito Party
 ②Elected 3 times (age: 56)

Democratic Club



Kunihiro Kozawa
 ①Democratic Party of Japan
 ②Elected 1 time (age: 26)



Mayumi Ogawa
 ①Democratic Party of Japan
 ②Elected 2 times (age: 38)



Masanori Yatagai
 ①Democratic Party of Japan
 ②Elected 2 times (age: 32)

Coming-of-age-day ceremony (Seijin shukuga shiki) in Komaki, 2012

- **Date/time:** Jan 8, 2012 (Sun) from 13:30 (registration from 13:00)
- **Venue:** Park Arena Komaki
- **Eligibility:** Registered Komaki residents born between Apr 2, 1991 and Apr 1, 1992; come directly to the venue on the day

* Donations will be accepted for the Tohoku Earthquake and Tsunami area. Thank you for your cooperation.



Inquiries Life-long Learning Section TEL0568-76-1179



Sunday Concert Christmas family concert

Performer : Title

Kiyoko Nagae (soprano) Maki Asai (piano) Freshers Volunteer Chorus:
"Silver Bells", "Noël D'aubervilliers", "White Christmas", and more...
Erica (vocals), Shunpei (Gt & Syn) Dance Studio Voyage
"Neon Genesis Evangelion – Genesis of Aquarion", "Precure Medley",
"Nella Fantasia", and more...



Dec 18 (Sun) 2011
Performance starts at 14:00

Manabi Sozo Hall
Asahi Hall

Free of charge



Tenorion Experience Corner

Listen to, sing and enjoy music with children.
Why not come as a family for the complete Christmas experience.

Inquiries Cultural Promotion Section TEL0568-76-1188

KIA cake decoration in English

Make seasonal character cakes with friends from around the world.

- Instructor** Bunny Fujita
- Date/Time** Dec 23 (Holiday) 10:00 to 13:00
- Venue** Ajioka Community Center (3F) Cooking Room
- Eligibility** Komaki citizens or KIA members aged elementary grade 4 to junior high grade 3
- Capacity** 12 each Japanese and foreigners (in order of application)
- Fee** KIA members: 200 yen, non-members: 500 yen
- What to bring** Apron, mask, bandanna, writing implements



Application Dec 6 (Tue) to Dec 20 (Tue) 9:00 to 17:00 ※Excluding Sundays, Mondays, holidays, and 12:00 - 13:00
Apply with cash in person to the Komaki International Association (KIA) Administration Office, Komaki Civic Hall 4F.

Inquiries Komaki International Association (KIA)
TEL0568-76-0905

Learn Japanese at preschool before elementary school entrance

Komaki International Association (KIA) has a preschool for students set to enter elementary school in the coming spring. This is to allow foreign children to quickly integrate into Japanese elementary school and adapt to studying in Japanese and to Japanese school life. We will study greetings, social rules and reading and writing the Japanese hiragana letters.



Date/time Saturdays January through March 2012

Venue Iwasaki, Koga and Oshiro childcare centers (The lessons will take place at the nearest center to you.)

Open to Children born in foreign countries that will enter Japanese elementary school in 2012

Number of participants 10 children at each childcare center

Fee Free of charge

Application Apply directly to the KIA office

Inquiries Komaki International Association (KIA) Administration Office, Komaki Civic Hall 4F
TEL0568-76-0905 FAX0568-71-8396 E-mail kia@ma.ccnw.ne.jp

Notice regarding counseling for Foreigners

Life Exchange Section (Seikatsukoryu-ka), South Government Office Bldg 2F, City Hall 9:00 - 17:00 (excluding 12:00 - 13:00)



Mon-Fri Portuguese

**Mon/Tues/Thurs
Spanish & English**

In addition, the Health Insurance and Pension Department and Child Welfare Division have staff available to help in Portuguese (9:00 to 17:00) the Welfare Division in Portuguese (9:30 to 16:30) and the Citizen Division in Chinese (9:00 to 16:30).

Inquiries Life Exchange Section TEL.0568-76-1173

Medical checkup information



Mother/Child Health Examination Calendar

※Make sure to bring your Maternal and Child Health Handbook.

Consultations	Schedule	Venue	Time	Eligibility/Description/Application/etc.
Health examinations and BCG vaccinations for 4-month-old infants, dental examinations for mothers	Dec 6 (Tue), 13 (Tue) Dec 20 (Tue)	Health Center (Hoken Center)	Reception 13:05 to 13:55	Children born in Aug., Heisei 23
Health examinations for 18-month-old infants	Dec 2 (Fri), 9 (Fri), 16 (Fri)	Health Center (Hoken Center)	Reception 13:05 to 14:15	Children born in Jun., Heisei 22
Dental examinations for children aged 2 years, 3 months	Dec 1 (Thu), 15 (Thu)	Health Center (Hoken Center)	Reception 9:00 to 10:10	Children born in Sep, Heisei 21
Health examinations for 3-year-old children	Dec 7 (Wed), 14 (Wed), 21 (Wed)	Health Center (Hoken Center)	Reception 13:05 to 14:15	Children born in Dec., Heisei 20
Niko niko cavity prevention class	Dec 21 (Wed) Reservations required	Health Center (Hoken Center)	10:00 to 11:00	20 Children that have begun to grow teeth and their parents
Baby food class, Gokkun (swallowing) level	Dec 7 (Wed) Reservations required	Health Center (Hoken Center)	10:00 to 11:00	27 sets of parents 4 months after giving birth
Baby food class, Kami-kami (biting) level	Dec 16 (Fri) Reservations required	Health Center (Hoken Center)	10:00 to 11:00	21 sets of parents 9 months after giving birth
Sunday class for new moms and dads Theme: Food	Dec 8 (Thu) Reservations required	Health Center (Hoken Center)	10:20 to 15:00	20 women 5 to 7 months pregnant and their husbands Possible for women to participate alone
	<ul style="list-style-type: none"> ●Description: Talking about food for pregnancy and cooking lesson, Talking about oral care and dental checkup. ●What to bring: Parent and child (maternal and child) health handbook, apron, half a cup of uncooked rice, writing utensil, toothbrush, cup, hand mirror, free dental examination ticket for adults (pregnant women)., ●Application: apply to the Health Center at least one week before the day, 			
Sunday class for new moms and dads Theme: Are you ready to give birth?	Dec 4 (Sun) Reservations required	Health Center (Hoken Center)	10:00 to 12:00 (Reception 9:30 to 9:50)	30 sets of women 6 months pregnant or later and their husbands
	<ul style="list-style-type: none"> ●Description: Talk about breastfeeding, giving birth and childcare, the role of the father, and experiencing pregnancy, practice holding baby dolls. ●What to bring: Parent-child (maternal and child) health handbook, writing utensils ●Application: apply to the Health Center at least one week before the day. 			
Nursing counseling	Dec 6 (Tue), 14 (Wed)	Health Center (Hoken Center)	9:00 to 12:00	<ul style="list-style-type: none"> ●Fees: Free ●Application: Health Center Reservations required
	Dec 26 (Mon)		13:00 to 16:00	
Parenting, pregnancy, and giving birth health counseling	Dec 9 (Fri)	Seibu Jidokan	10:00 to 11:15	<ul style="list-style-type: none"> ●Description Consultation regarding worries/concerns for raising children, body measurements, blood pressure measurement, urine inspection (optional) ●Fees: Free
	Dec 16 (Fri)	Minami Jidokan		
	Dec 20 (Tue)	Ajioka Jidokan		
Baby visit	About 2 or 3 months after birth, a health contact and veteran health contact will come visit your home with a few gifts to congratulate you on the birth of your baby. (You will be contacted in advance to set a convenient time.)			

※Health examination admission times differ depending on date of birth. Please refer to the health examination schedule that will be sent in the mail.

Inquiries Health Center TEL.0568-75-6471

Medical checkup information

Screening tests for cancer and osteoporosis

	Type	Schedule	Time	Venue	Eligibility/Description/Application/etc.
Group screening	Stomach cancer screening (Indirect stomach X-ray)	Feb 21 (Tue)	9:00 to 11:00	Health Center (Hoken Center)	Registered Komaki residents over 40 years old ●Capacity: 40 ●Fee: 930 yen ●Application: Health Center
	Colorectal cancer screening (Fecal occult blood test)	※A feces sample container will be collected on the day stomach cancer screening is implemented.		Health Center (Hoken Center)	Registered Komaki residents over 40 years old ●Fee: 520 yen ●Application: Health Center
	Breast cancer screening (Mammography)	Dec 8 (Thu) Dec 19 (Mon) Jan 23 (Mon)	9:00 to 15:30	Health Center (Hoken Center)	Registered Komaki residents over 40 years old (①Persons over 40 born in odd years ②Persons born in even years that did not receive an examination in Heisei 22 ③Persons turning 40 that were born in Showa 46) ●Capacity: 85 ●Fee: 1,200 yen ●Application: Health Center *Persons that have received a free coupon may apply.
		Jan 17 (Tue)	9:30 to 15:30	Tobu Community Center	
	Cervical cancer screening (Cytodiagnosis)	Dec 20 (Tue)	14:00 to 15:30	Tobu Community Center	Registered Komaki residents over 20 years old (①Persons over 20 born in odd years ②Persons born in even years that did not receive an examination in Heisei 22) ●Capacity: 100 ●Fee: 750 yen ●Application: Health Center *Persons that have received a free coupon may apply.
	Osteoporosis screening	Jan 19 (Thu)	13:30 to 15:30	Tobu Community Center	Registered Komaki residents over 30 years old ●Capacity: 75 ●Fee: 830 yen ●Application: Health Center
Feb 9 (Thu)		Health Center (Hoken Center)			
Lung cancer screening (Phlegm screening)	Consultation period until Feb 24 (Fri) Heisei 24		Health Center (Hoken Center)	Registered Komaki residents meeting any of the following: (○50 years old or older with smoking index of 600 or higher ○40 years old that has coughed up blood within the last 6 months) ●Fee: 470 yen ●Application: from Feb 17 (Fri) at the Health Center	
Individual examination	Cervical cancer facility screening (Cytodiagnosis)	Consultation period Mar 31 (Sat) Heisei 24	Local Ob/Gyn clinic	Registered Komaki residents over 20 years old (①Persons over 20 born in odd years ②Persons born in even years that did not receive an examination in Heisei 22) ●Fee: cervical cancer examination 1,250 yen, cervix/body cancer examination 2,350 yen (Only for people determined to require the examination by the physician) ●Capacity: 100 people ●Application: Health Center *Persons that have received a free coupon may apply directly to a medical facility.	
	Stomach cancer and colorectal cancer screening	Consultation period until Feb 14 (Tue) Heisei 24	Local medical institution	Registered Komaki residents over 40 years old ●Fee: 4,800 yen	●Application: Local medical institutions
	Prostate cancer screening			Registered Komaki residents over 50 years old ●Fee: 1,500 yen	
	(Chest X-ray)			Registered Komaki residents over 40 years old ●Fee: 1,310 yen	
Hepatitis screening	People born between April Showa 46 and March Showa 47 ●Fees: Free				

【Regarding breast cancer】cervical cancer screening

※From Heisei 19 we have promoted screening once every two years based on even and odd years (using the Japanese calendar). Thank you for your understanding and cooperation.

※People eligible to receive a free coupon were individually sent one in June. Free coupons expire March Heisei 24 at the end of this fiscal year. Use your free examination ticket early, before it runs out.

Inquiries Health Center TEL.0568-75-6471

※Please see the relevant service counter for more details regarding any of the items contained herein.

Edited
and
Published

Komaki City Hall Department of Civil Industry Life Division

1-1 Horinouchi, Komaki-shi, Aichi-ken 485-8650 TEL: 0568-76-1173 FAX: 0568-72-2340

<http://www.city1.html1.komaki.aichi.jp/contents/90000011.html>



Printed with soy ink for the sake of the environment.

Printed on recycled paper for the sake of the environment.