

Life Information News

KOMAKI

7 July
2009 issue

Contents

21st Annual Komaki Heisei Summer Festival

8th Annual Miss Nikkei Pageant
and Brazilian Festival

Participants Wanted For the 30th Annual
Komaki Citizens' Festival

Get Involved with Your Ward or
Neighborhood Council

Information on Deadlines

【Tax Q&A】

Information Regarding Checkups

21st Annual Komaki Heisei Summer Festival

(For details to P.2)



Population of foreigners / 9,027 residents

Population of Komaki-city / 153,642 residents

Current as of June 1, 2009

21st Annual Komaki Heisei Summer Festival



This festival is brought to life with dance performances, Japanese taiko drum performances, and an *andon* lantern float parade — an unusual sight in the Tokai region. In addition, the Sunday finale will envelop you in a world of fantasy created by a mixture of hand-launched fireworks, American fireworks, and Japanese taiko drums.

When: Sat, July 25, 6:30 - 9:00 pm; Sun, July 26, 6:00 - 9:30 pm

Events will go ahead in the case of light rain but will be suspended for stormy weather.

Schedule of Events	Sat, July 25	6:30 PM: Opening Ceremony (Komaki Civic Center) 7:00 PM: Float parade begins. (Komaki Civic Center → Melody Park [Komaki Station east side])
	Sun, July 26	6:00 PM: Opening Ceremony, Commendation Awards (Melody Park [Komaki Station east side]) 7:00 PM: Float parade begins. (Melody Park [Komaki Station east die] → Komaki Civic Center) 9:00 PM: Finale (Komaki Civic Center) Hand-launched fireworks, American fireworks, and taiko drums

For more information, contact the Komaki Heisei Summer Festival administration office (in the Life Exchange Div. at Komaki City Hall): Tel 0568-76-1173, Fax 0568-72-2340



Yukata Dressing Room

Sign-Up Period

Location

Why not wear a yukata at the Heisei Summer Festival?

Time Sat, July 25 15:00-17:00 **Place** Chess Room, 4th Floor, Komaki Civic Center
Intended for Foreigners living or working in Komaki **Participation** 50 people (first-come, first-served; KIA members take precedence)
Cost Free We expect you to bring your own yukata, obi, koshihimo, komono, and socks. Please consult with our administration office if you do not have your own.

Sign-Up Period Wed, July 1 - Fri, July 24, 2009

Location Visit the Komaki International Association (KIA) Administration Office in person or by phone, fax, or email to sign up.
 TEL 0568-76-0905 FAX 0568-71-8396 Email kia@ma.ccnw.ne.jp



8th Annual Miss Nikkei Pageant and Brazilian Festival



We welcome this event, begun in 2002 and returning for its eighth year, in the hopes that it will raise awareness of the Nikkei Brazilian community in Japan and deepen our relations with them. Each year, thousands of Nikkei Brazilians and Japanese from across the country get involved in order to promote international exchange. This year, in addition to the Miss Nikkei headline event, there will also be a children's category and a men's category. Please come and take part in this cultural event that celebrates the greatest beauty the Brazilian community has to offer in Japan.

Time: Sun, July 19, 11:00 - 19:00 **Place:** Komaki Civic Center

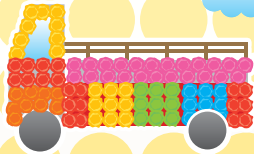
Cost: Free **Contact:** Nishikawa (tel. 090-3938-4146)





Chip in and help make the 30th Annual Komaki Citizens' Festival a success !

**Participants Wanted
For the 30th Annual
Komaki Citizens' Festival**



Parade

This is the main event of the festival, taking place on Sunday October 18 along the Inuyama Park-Komaki municipal route. The highlights include a Saneiketsu dance performance, which proceeds along the entire route, and lively marching bands from each elementary and junior high school.

<p>'A': Saneike tsu (the Three Heroes) 'B': Mitsuhome (the Three Princesses)</p>	<ul style="list-style-type: none"> • Qualifications : you must live, work, or study in Komaki and be at least 18 years of age. (Both experienced and first-time applicants accepted, with preference given to first-timers.) • Participants required : 6 (1 person to play each role: Nobunaga, Hideyoshi, Ieyasu, Nohime, Nene, and Senhime) *Mementoes included *Participants will be chosen randomly from among the applicants.
<p>'C': Saneike tsu-Mitsuhome Procession Participants (Others may participate by wearing Warring States-era clothing.)</p>	<ul style="list-style-type: none"> • Qualifications : you must live, work, or study in Komaki and be in junior high school or older. • Participants required : up to 30

Applications must be received by the deadline: Fri, July 24.

To apply, clearly write your intended role (A, B, or C), your address, full name, date of birth, occupation, place of study (school name), and telephone number and apply by postcard, fax, or email to the Citizens' Festival Planning Committee. (You cannot apply over the phone.)

Komaki Station-Side Exhibition Grounds (Melody Park)

These grounds will provide enjoyment for people of all ages, hosting everything from product exhibitions from various prefectures to children's attractions. In particular, one must-see event will be the intense dance performances put on by various dance teams on the special stage.

Participate in 'Dance Mix 2009 in Komaki' Note: Repeat Participation Allowed in the Contest and Free Dancing	
Contest	<ul style="list-style-type: none"> • Date: Sat, Oct 17 • Qualifications : anyone who can participate in teams of 5 people or more in the award ceremony • Includes : Dance Events and Free Dancing • Judged Performance Length : 5 minutes or less (including entrance and exit) • Entrance Fee : ¥500/person • Prizes : Grand prize, placement prizes, and T-shirts for all participants • Number of Teams : up to 25 (chosen at random depending on the number of applicants)
Free Dancing	<ul style="list-style-type: none"> • Date: Sun, Oct 18 • Qualifications : teams of 5 members or more • Includes : Dance Events and Free Dancing • Performance Length : up to 5 minutes • Entrance Fee : ¥500/person (includes T-shirts for all participants) • Number of Teams : up to 25 (chosen at random depending on the number of applicants)

Applications must be received by the deadline: Fri, July 24.

To sign up, fill out the application form and submit it to the Citizens' Festival Planning Committee. Application forms are available at the city website, the Life Exchange Div., various community centers, the Civic Center, Manabi Souzou Hall, and Park Arena Komaki. Applications may be submitted by post, fax, email, or in person.

For more information, contact: Komaki Citizens' Festival Planning Committee Office (at the Life Exchange Div.)
 Post: 〒485-8650 (no address required) Tel: 76-1173 Fax: 72-2340
 Email: seikatsu@city.komaki.lg.jp Web: www.city.komaki.aichi.jp/contents/03011150.html

Get Involved with Your Ward or Neighborhood Council

The Eyes of the Neighborhood Watch for Suspicious Characters

By greeting each other with a "konnichiwa", you can strengthen relationship within the community and prevent crime.

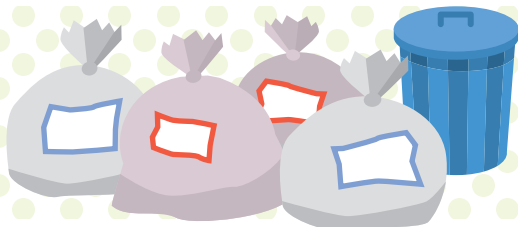


Help Each Other Out When Disaster Strikes

When a major disaster strikes, firemen, police, and other city employees can't always get there right away. During the Great Hanshin Earthquake and Chuetsu Earthquake, around 90% of the victims were saved through the rescue efforts of regular citizens.

Participate in Local Events

Neighborhood Councils put on all kinds of events, from local Bon dances to various festivals, exercise meets, senior citizen meetings, and more. Do your best to take part in these.



Separate Your Garbage

If each of us follows the rules, we can achieve a clean, garbage-free city.

When the worst occurs, your job is to be a good neighbor.
You can start by getting in touch with your
Ward or Neighborhood Council Leader!

For more information, contact: Komaki City Hall, Civil Industry Dept., Life Exchange Div. Tel: 0568-76-1120

The next tax deadline is Friday, July 31.



Fixed Asset Tax (2nd Period)

National Health Insurance Tax (3rd Period)

Nursing Care Insurance Fees (3rd Period)



Please be prompt with payment! Obey the rules regarding payment for everyone's sake.
Direct bank account withdrawal is convenient and can help you avoid missing payments.
When paying through direct withdrawal, please check your account balances the day before.

The City Hall Income Tax Office is open the following Sundays for tax consultations and payment.

Dates Sunday, July 12, 9:00 AM - 4:00 PM
Sunday, July 26, 9:00 AM - 4:00 PM

Taxes can be paid at the Komaki Station branch office Monday to Friday, Saturday, Sunday, and national holidays, for your convenience.

Service hours are 8:30 am to 5:15 pm.

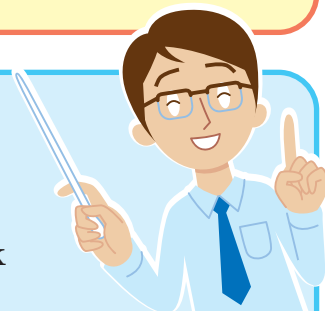
The Komaki Station branch office is closed Dec. 31 and Jan 1.

For more information, inquire at the Income Tax Office:

TEL 72-2101 extensions 276-279 TEL 76-1117・76-1118(Direct lines)



Tax Q&A



Q1

I'd like to pay my taxes, but I can't make it to the bank on weekdays.

A

You can pay on Saturdays and national holidays at the Komaki City Hall branch office located at Meitetsu Komaki Station.

➡ Open Hours: 8:30 AM - 5:15 PM

In addition, you can pay on the second and fourth Sunday of every month at the income tax office on the second floor of the main building of Komaki City Hall.

➡ Open Hours: 9:00 AM - 4:00 PM

—Please take advantage of these times and locations.

Q2

I accidentally paid twice the correct tax amount. What happens with overpaid taxes?

A

If you've paid too much, you will be sent a tax refund notice. There are two ways to redeem your refund. The first is to have it transferred to a bank account of your choice. Please take the return postcard included with your notice, fill in your bank account information and any other required details, and mail it back to us. The funds will usually be transferred one month later. The second way is to be refunded in cash. If you have received a refund notice from City Hall and do not have a bank account, visit the Komaki City Hall income tax office, bringing your identification and personal seal with you. The hours during which you can pick up your refund are weekdays only, from 9:00 a.m. until 3:00 p.m. Note that if you have other unpaid taxes, your refund will be applied toward those.

Information Regarding Checkups



Mother & Child Checkup Calender

Please remember to take your maternal and child health handbook with you when you go!

Item	Dates	Hours	Who it's for
Health checkups and BCG shots for 4-month-olds, and dental examination for mothers	Tue, July 7	Admitting Hours 1:05 pm - 1:55 pm	Born in Feb, 2009
	Tue, July 14		Born in March, 2009
	Tue, July 21 Tue, July 28		
Health checkups for 1-and-a-half-year-olds	Fri, July 3 Fri, July 10 Fri, July 17	Admitting Hours 1:05 pm - 2:15 pm	Born in Jan, 2008
Dental examination for children aged 2 years 3 months	Thu, July 9 Thu, July 23	Admitting Hours 9:00 am - 10:10 am	Born in Apr, 2007
Health checkups for 3-year-olds	Wed, July 1 Wed, July 8 Wed, July 22	Admitting Hours 1:05 pm - 2:15 pm	Born in July, 2006

Admitting hours for health checkups vary according to the child's birthdate. Instructions regarding checkup scheduling will be sent to you, so be sure to check them. For more details, call the Health Center at 75-6471.



Cancer (Collective) Exams & Osteoporosis Exams

Examination	Who it's for	July, 2009
Stomach cancer exam Stomach X-ray test 930 yen	Registered city residents aged 40 or older	22 nd
Colon cancer exam Fecal occult blood test 520 yen	Registered city residents aged 40 or older	Done together with a stomach cancer exam.
Breast examination Mammogram 1,200 yen	Registered city residents aged 40 or older and who were born on an odd-numbered year in the Taisho or Showa eras, as well as those turning 40 in 2009. <small>(Those born on an even-numbered year who did not receive an exam in 2008 are also eligible.)</small>	16 th & 30 th
Osteoporosis exam 830 yen	Registered city residents aged 30 or older	11 th
Chest X-Ray exam Free	Registered city residents aged 65 or older	11 th

Exams for stomach cancer, colon cancer, and osteoporosis can be done once each during the period from May to March of the following year. Uterine cancer and X-ray breast cancer exams only need to be done once every two years. (in accordance with the Ministry of Health, Labor and Welfare's "Guidelines for Cancer Prevention Education and Examinations")
Note: Cancer and osteoporosis exams marked with a square () by the date are performed at the Kitazato Civic Center. Exams whose dates are not marked by a square are performed at the Hoken Center.

For More Information Regarding Cancer Exams

Each month's issue includes information on which examinations you can be admitted for. Feel free to contact the Health Center for an examination. (Mon - Fri, 8:30 am - 5:15 pm)

Exemptions Individuals described below may receive cancer examinations (but not osteoporosis exams) free of charge. Be sure to use the correct form when requesting an exam.

- ① Individuals 70 years and older ② Bedridden individuals 65 and older
- ③ Individuals from households receiving welfare ④ Individuals from households exempt from city resident tax



Komaki City Hall Department of Civil Industry Life Division
1-1 Horinouchi, Komaki-shi, Aichi-ken 485-8650
Tel: 0568-76-1119 Fax: 0568-72-2340
<http://www.city.komaki.aichi.jp/contents/90000011.html>

Please see the relevant service counter for more details regarding any of the items contained herein.